

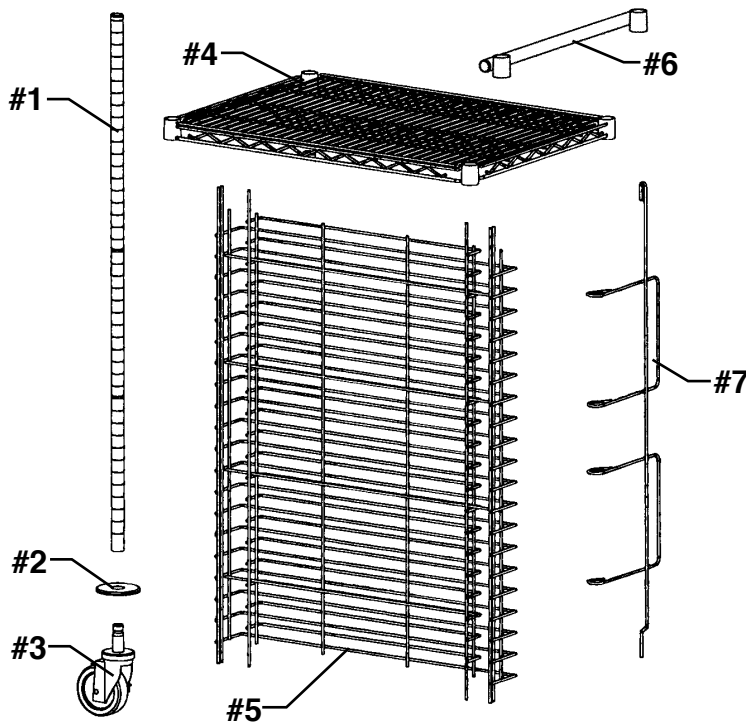
Electronic Vibration Dampening Tray Carts

ASSEMBLY INSTRUCTIONS

CAUTION

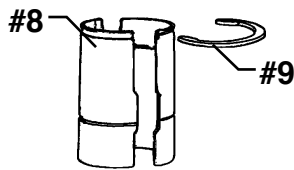
INSPECT CONTENTS IMMEDIATELY AND FILE CLAIM WITH DELIVERING CARRIER FOR ANY DAMAGE. **SAVE YOUR BOX AND ALL PACKING MATERIALS.** YOU ARE RESPONSIBLE FOR DAMAGE TO YOUR UNIT IF RETURNED IMPROPERLY PACKED.

Parts List

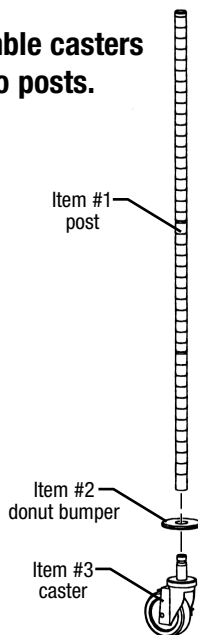


Item #	qty	part #	description
1	4	*	post
2	4	A200019	donut bumper
3	2	A213367	swivel caster
4	2	B200728	wire shelf
5	2	*	tray slide rack
6	2	PH21-C	push handle (for half-size units only)
7	2	*	tray stop
8	**	A208909	aluminum split sleeve
9	**	A200021	retaining ring
----- NOT SHOWN -----			
	2	A213368	swivel caster w/brake
	1	DC16-S	drag chain
	22/24	A215454	vinyl caps

* Part numbers vary, depending on unit(s) ordered.
** Quantity varies, depending on unit(s) ordered.



Step 1 - Assemble casters and bumpers to posts.



(continued on next page) →

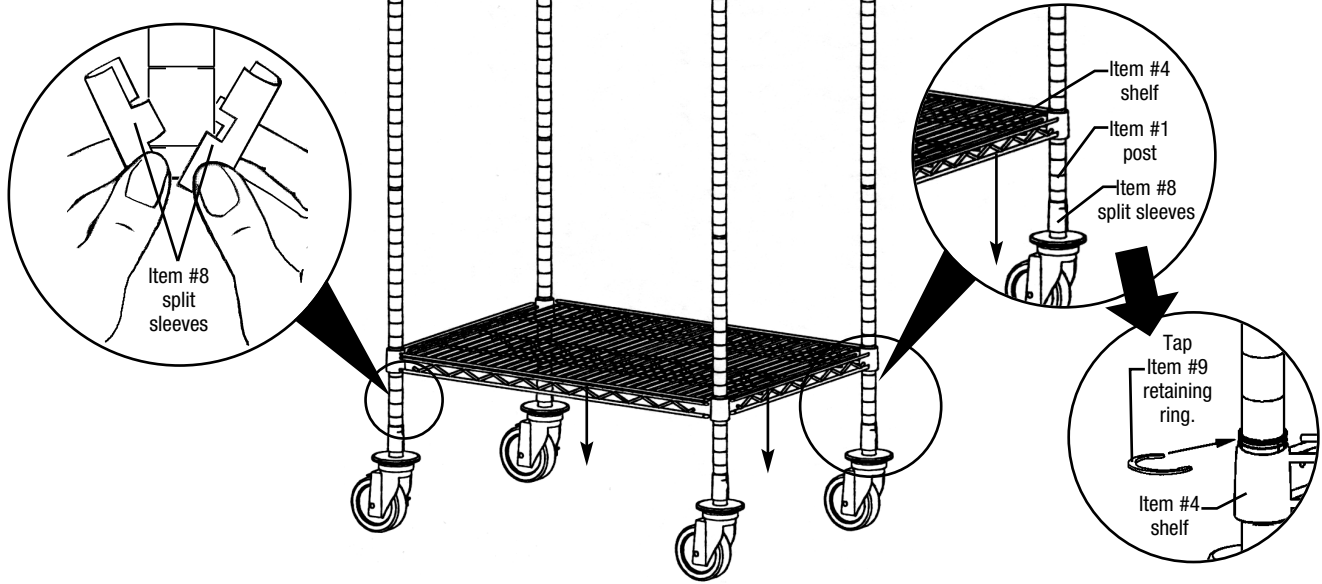


Electronic Vibration Dampening Tray Carts

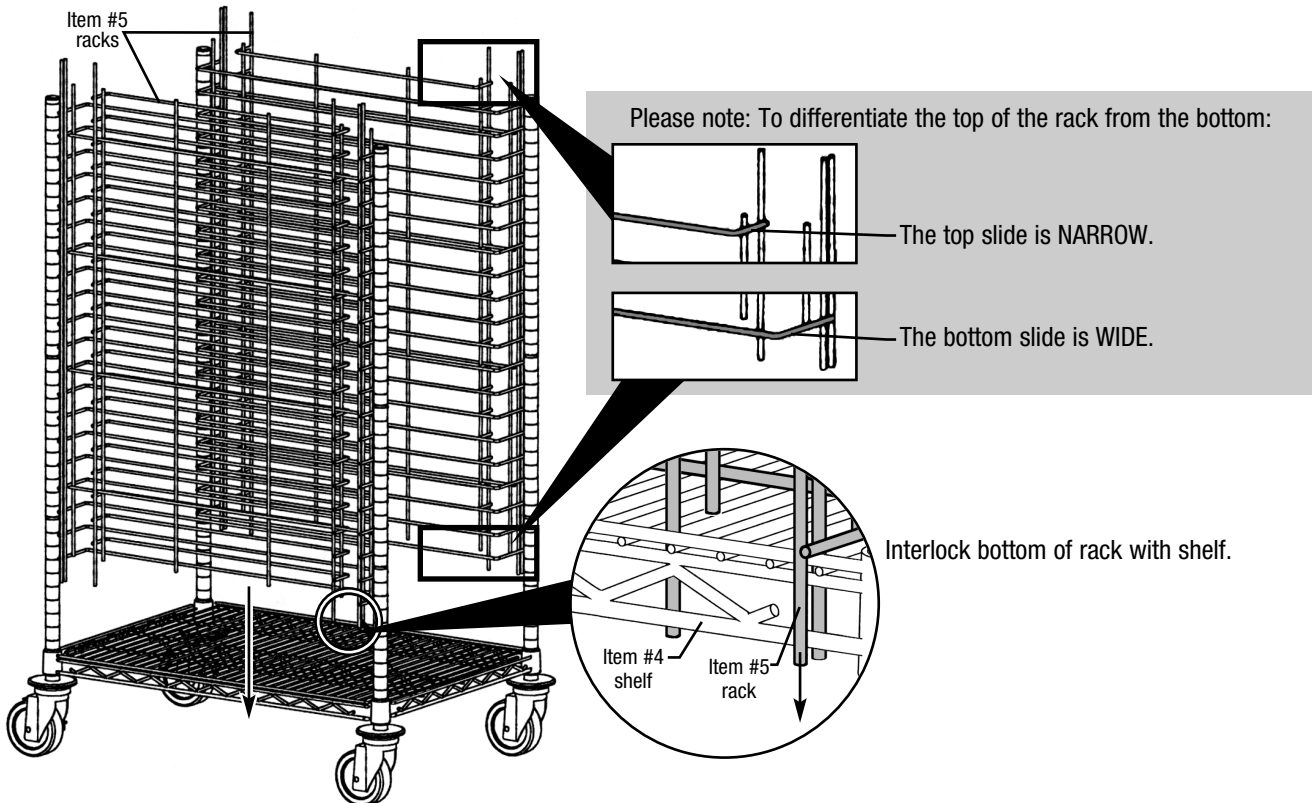
ASSEMBLY INSTRUCTIONS

Step 2 - Assemble bottom shelf to posts.

Snap split sleeve onto each post at the bottommost groove (the wider part of the taper goes toward the bottom).



Step 3 - Assemble tray slide racks to bottom shelf.



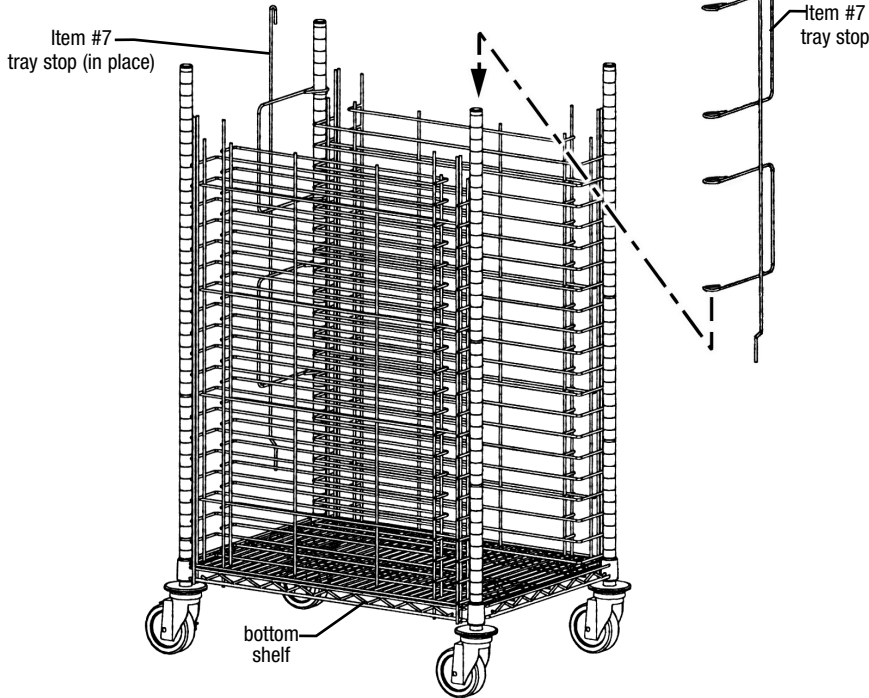
(continued on next page)

Electronic Vibration Dampening Tray Carts

ASSEMBLY INSTRUCTIONS

Step 4 - Assemble tray stops to unit.

Slide down until tray stop rests on bottom shelf.



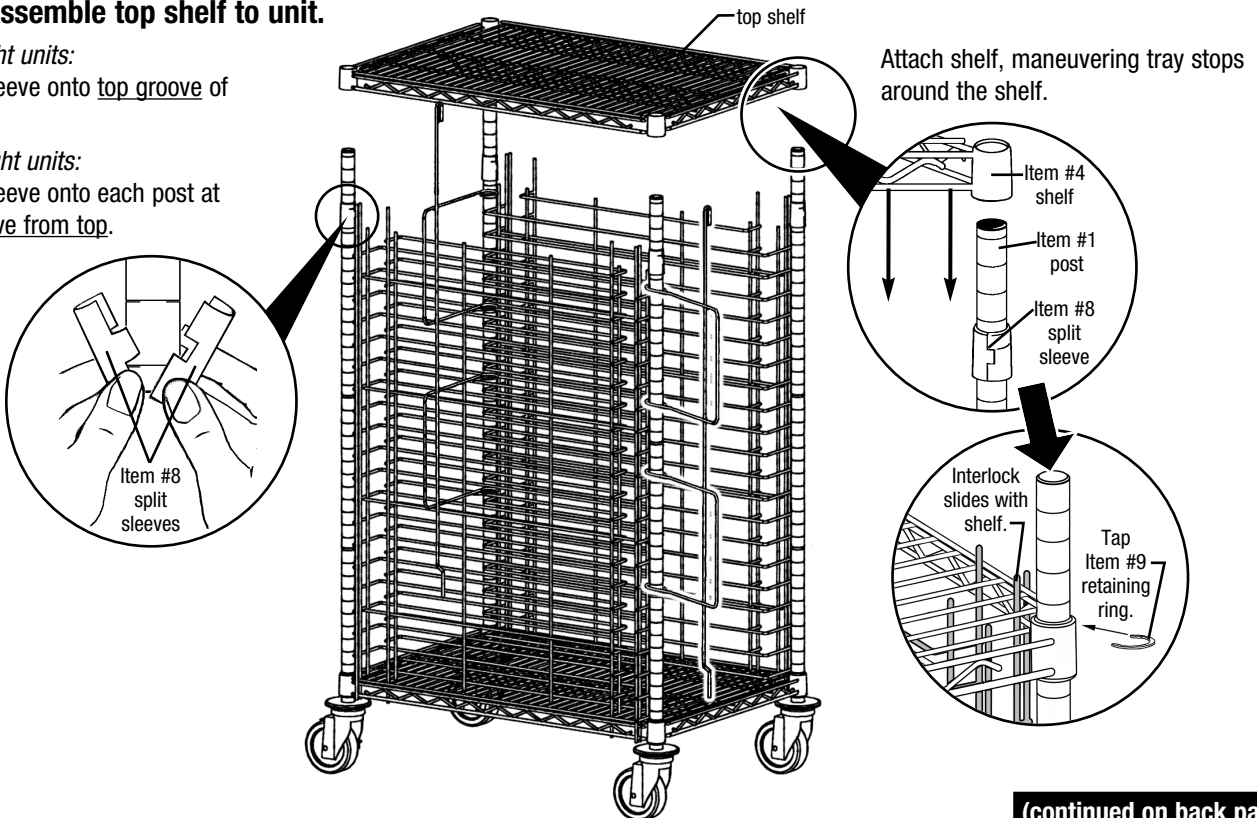
For the next step, please note:

May require the assistance of a second person.

Step 5 - Assemble top shelf to unit.

For full-height units:
Snap split sleeve onto top groove of each post.

For half-height units:
Snap split sleeve onto each post at the 6th groove from top.

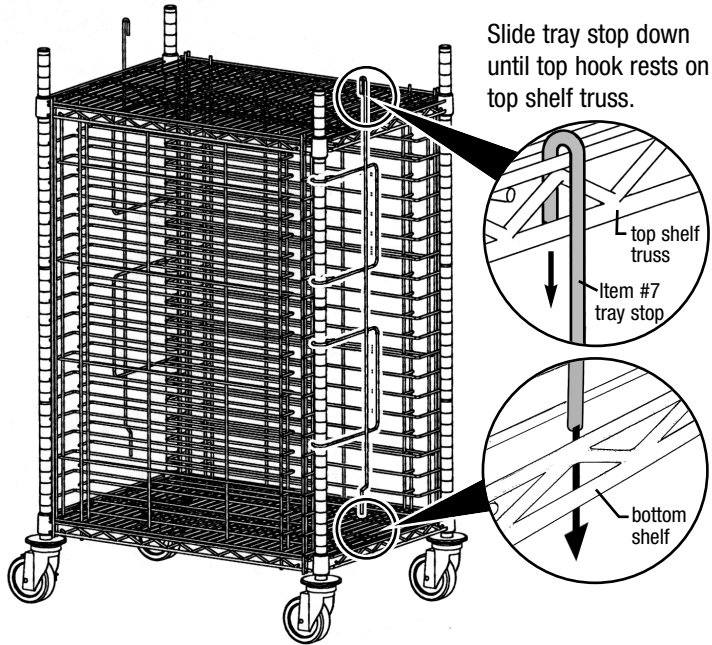


(continued on back page)

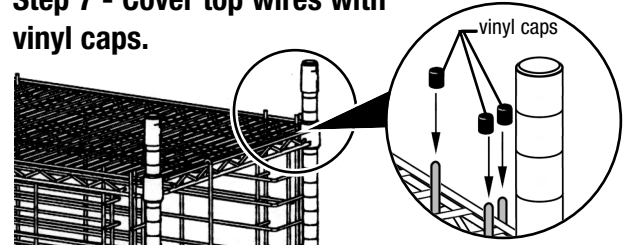
Electronic Vibration Dampening Tray Carts

ASSEMBLY INSTRUCTIONS

Step 6 - Hook tray stops to top shelf.



Step 7 - Cover top wires with vinyl caps.

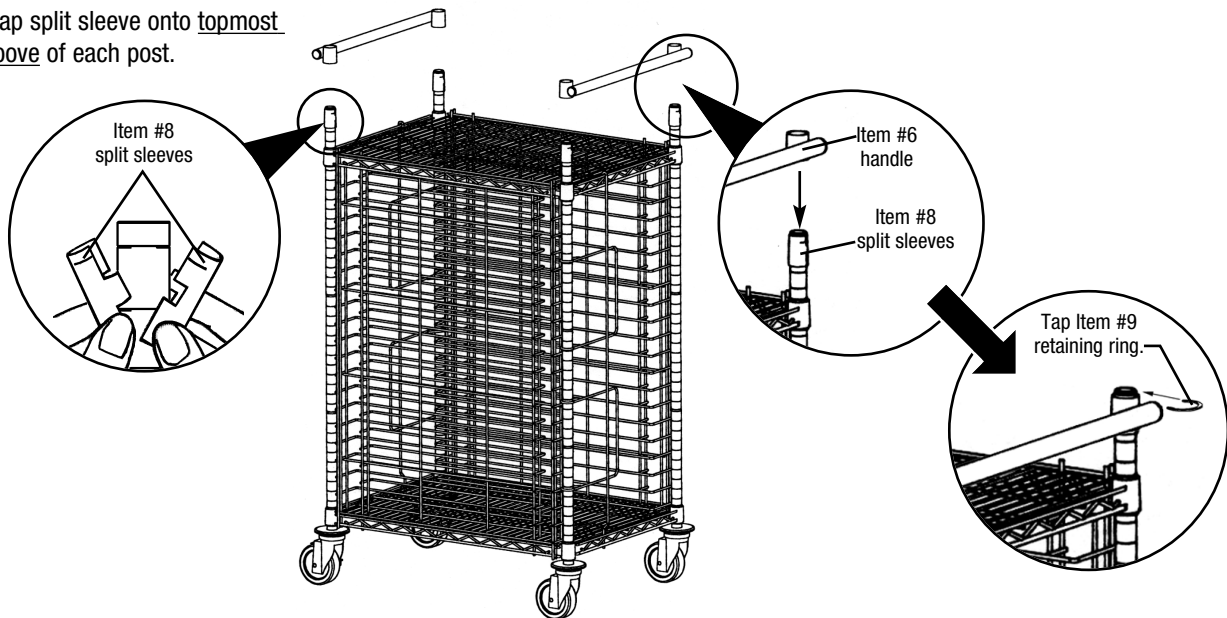


To finish assembly, attach drag chain to underside of bottom shelf—typically near center of shelf.

For half-height units only:

Assemble handles to unit.

Snap split sleeve onto topmost groove of each post.



(End)

EAGLE
GROUP
Profit from the Eagle Advantage®

• 100 Industrial Boulevard, Clayton, Delaware 19938-8903 U.S.A.
• Phone: 302/653-3000 • 800/441-8440 • Fax: 302/653-2065
• www.eaglegrp.com • www.eaglegrpnews.com • www.eaglemhc.com

Eagle Foodservice Equipment, Eagle MHC, and SpecFAB® are divisions of Eagle Group. ©2023 by the Eagle Group