



Material Handling, Healthcare & Cleanroom Equipment

Phone: (800) 441-8440 • (302) 653-3000

FAX: (302) 653-2065

# Product Announcement

## Short Form Specifications

Eagle Group Laboratory Exhaust Canopies, model # \_\_\_\_\_.  
Island or wall mount exhaust canopies feature 16 gauge type 304 stainless steel construction, fully welded seams, polished interior and exterior, steel rod suspension brackets, full perimeter condensation edge, 19" overall height, and integral duct collar. Exhaust canopies are available in 30" and 36" depths, and widths ranging from 36" to 96".

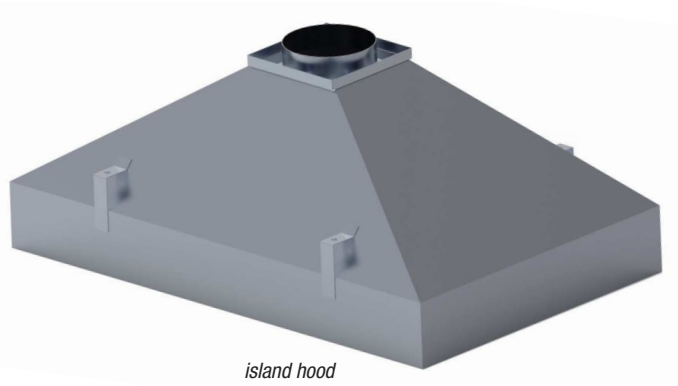
Item #: _____
Model #: _____
Project #: _____
SIS #: _____

EG8226 Rev. 09/23

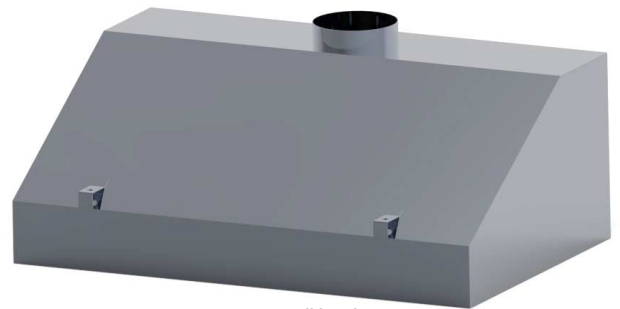
## New Laboratory Exhaust Canopies

### Design & Construction Features:

- 16-gauge type 304 stainless steel construction
- Fully welded seams
- Polished interior and exterior
- Integrated suspension brackets and duct collar
- Full-perimeter condensation edge
- 30" and 36" depths
- 36", 48", 60", 72", 84" and 96" widths



island hood



wall hood

*Eagle's NEW Laboratory Exhaust Canopies are ideal for exhausting steam, odors, heat etc. Features the strength and beauty of 16 gauge type 304 stainless steel construction. Integral steel rod suspension brackets. Duct collar. Choose between wall and island units, 30" and 36" depths.*

For custom configuration or fabrication needs, contact our **SpecFAB® Division**.

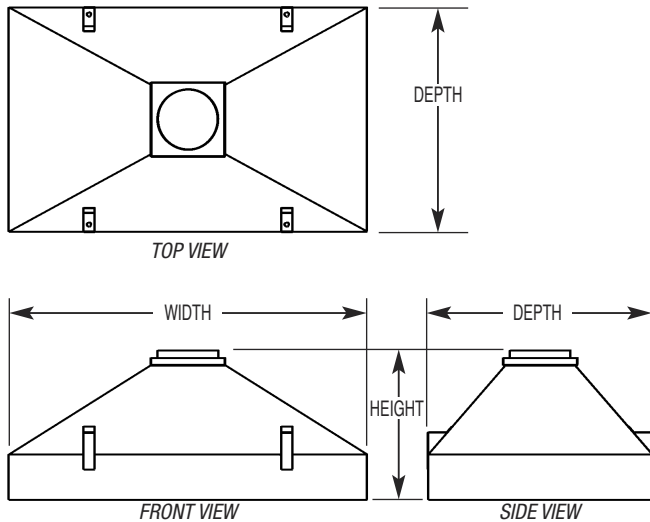
Phone: (302) 653-3000. FAX: (302) 653-2065.

E-mail: quotes@eaglegrp.com

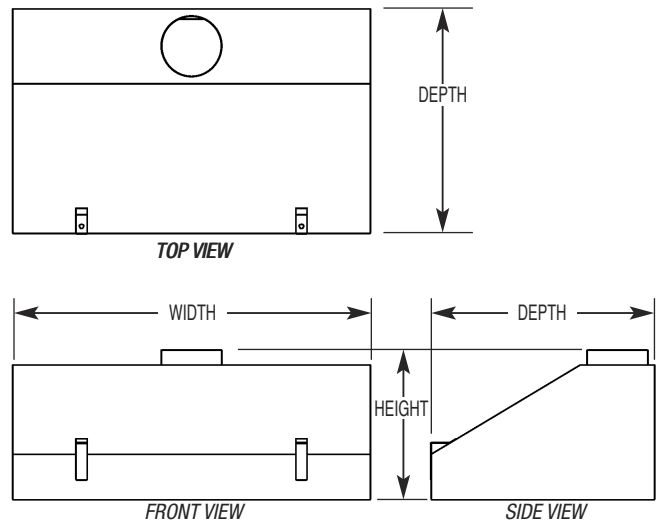


# Laboratory Exhaust Canopies

**Island models**



**Wall models**



depth			width		overall height *		Island models	Wall models
in.	mm		in.	mm	in.	mm	model #	model #
30"	762		36"	914	19"	483	SSC-IEC-3630-18	SSC-WEC-3630-18
30"	762		48"	1219	19"	483	SSC-IEC-4830-18	SSC-WEC-4830-18
30"	762		60"	1524	19"	483	SSC-IEC-6030-18	SSC-WEC-6030-18
30"	762		72"	1829	19"	483	SSC-IEC-7230-18	SSC-WEC-7230-18
30"	762		84"	2133	19"	483	SSC-IEC-8430-18	SSC-WEC-8430-18
30"	762		96"	2438	19"	483	SSC-IEC-9630-18	SSC-WEC-9630-18
36"	914		36"	914	19"	483	SSC-IEC-3636-18	SSC-WEC-3636-18
36"	914		48"	1219	19"	483	SSC-IEC-4836-18	SSC-WEC-4836-18
36"	914		60"	1524	19"	483	SSC-IEC-6036-18	SSC-WEC-6036-18
36"	914		72"	1829	19"	483	SSC-IEC-7236-18	SSC-WEC-7236-18
36"	914		84"	2133	19"	483	SSC-IEC-8436-18	SSC-WEC-8436-18
36"	914		96"	2438	19"	483	SSC-IEC-9636-18	SSC-WEC-9636-18

\* Height includes duct collar.