

Eagle Hand Sinks

The Industry's Clean Leader



Let the industry's clean leader help by giving you the widest range of hand sink choices. With over 40 models to choose from and a wide array of configurations and accessories, you'll find a solution for every application.

Eagle Group is a proud partner with
 **handwashingforlife**[®]
Learn more about our partnership

MICROGARD[®]



1-800-441-8440

100 Industrial Boulevard, Clayton, DE 19938-8903 USA | Phone: 302-653-3000 | www.eaglegrp.com

Disclaimer: MICROGARD[®] is a second line of defense. In keeping with good hygiene practices, clean this product as usual. The protection will not wash out, while organic bactericides may.*

*MICROGARD[®] does not protect users or others against bacteria, viruses, germs or other disease organisms. Always clean this product thoroughly after each use.

EAGLE
GROUP
Profit from the Eagle Advantage[®]

Why Choose Eagle Hand Sinks

The Eagle Advantage!

1.

Positive Drain Bowl Design

We offer the industry's only deep-drawn positive-drain bowl, assuring complete drainage and meeting even the most stringent health code requirements.



2.

Exclusive MICROGARD® Protection adds another level of protection

Many of our hand sinks are available with our exclusive MICROGARD® option. The MICROGARD® antimicrobial finish is an antimicrobial agent which contains built-in protection to retard the growth of a broad range of bacteria, mold and mildew on surfaces that causes stains, odors and degradation. Eagle's MICROGARD® combines inorganic antimicrobial silver ions with a patented delivery system. The silver ions react with bacteria in three ways: 1) suffocates the cell, 2) stops the cell reproduction system, and 3) stops the cell from growing. Our inorganic compound is guaranteed to work for life.

MICROGARD®

3.

Over 40 Models Available

Traditional Hand Sinks
Space-Saver Hand Sinks
Hand Sinks with Wrist Handles
Electronic Hand Sinks -
AC & Battery Power
Knee/Foot Valve
Operated Hand Sinks

Hand Sinks with Towel
and/or Soap Dispensers
Special Purpose Hand Sinks
Hand Wash Sinks
Portable Hand Sinks
Lavatory Sinks with
Marine Edge



100 Industrial Boulevard, Clayton, DE 19938-8903 USA | Phone: 302-653-3000 | www.eaglegrp.com



Disclaimer: MICROGARD® is a second line of defense. In keeping with good hygiene practices, clean this product as usual. The protection will not wash out, while organic bactericides may.*

*MICROGARD® does not protect users or others against bacteria, viruses, germs or other disease organisms. Always clean this product thoroughly after each use.

Traditional Hand Sinks Wall Mounted

These units are wall mounted and come with basket drain or lever drain, and "Z" wall mount bracket. Basket drain and lever drain come with crumb cup. Most of these units have accessories as standard components.



HSA-10*
Basic hand sink



HSA-10-F*
The industry standard



HSA-10-FL
Hand Sink With Lever Drain



HSA-10-F0
Hand Sink With Lever Drain w/
Overflow



HSA-10-FA*
Includes P Trap

Hand Sinks with Standard Wrist Handles

Both units feature "Z" wall mount bracket and basket drain with crumb cup.



HSA-10-FW*
Basic with wrist handles



HSA-10-FAW*
Basic with wrist handles
and P-Trap

MICROGARD®

*MICROGARD® available for these hand sinks.
Add -MG to model number.



100 Industrial Boulevard, Clayton, DE 19938-8903 USA | Phone: 302-653-3000 | www.eaglegrp.com

Disclaimer: MICROGARD® is a second line of defense. In keeping with good hygiene practices, clean this product as usual. The protection will not wash out, while organic bactericides may.*

*MICROGARD® does not protect users or others against bacteria, viruses, germs or other disease organisms. Always clean this product thoroughly after each use.

Portable Hand Sinks

No Additional Plumbing Required

Eagle's Portable Hand Sinks require no additional plumbing. All you need is water and a 120-volt receptacle! Everything is self-contained, right down to the built-in scrap chute with waste can inside the cabinet!



Standard Features

- Stainless steel top with box marine edge on front and ends, with deck mount faucet and soap dispenser.
- Towel rack accommodates standard rolled paper towels.
- 5-gallon fresh water tank.
- 7-gallon gray water tank.

Open Base Portable Hand Sink Offers Economical Option

Standard Features



- Heavy gauge stainless steel tabletop with removable pan, deck mount faucet, and trash chute.
- Furnished with soap dispenser, paper towel dispenser, 115-volt pump.
- 5-gallon fresh water tank(s).
- 7-gallon waste water tank(s).

Portable Hand Sinks

with Stainless Steel Cabinet

- Stainless steel cabinet body with double pan hinged stainless steel locking door.
- 4" casters (2 w/brake, 2 swivel) with non-marking tread.
- Overall dimensions: 24" width, 26" length, 44-1/2" height.



Sinks with Single 14" x 10" Bowl

PHS-S-C
with Cold Water Only

PHS-S-H
with Hot & Cold Water

Sinks w/3 Bowls

PHS-S3-C
with Cold Water Only

PHS-S3-H
with Hot & Cold Water



Sinks with Removable Acrylic Water Plate (U.S. Patent #9,790,674)

PHS-A-C
with Cold Water Only

PHS-A-H
with Hot & Cold Water



100 Industrial Boulevard, Clayton, DE 19938-8903 USA | Phone: 302-653-3000 | www.eaglegrp.com

Disclaimer: MICROGARD® is a second line of defense. In keeping with good hygiene practices, clean this product as usual. The protection will not wash out, while organic bactericides may.*

*MICROGARD® does not protect users or others against bacteria, viruses, germs or other disease organisms. Always clean this product thoroughly after each use.



Hand Wash Sinks with Built in Towel Dispenser

Features heavy gauge 304 Series stainless steel all-welded construction, hinged door with pull handle and magnetic catch, built-in C-fold towel dispenser, soap dispenser, faucet, and basket drain with crumb cup.

HWC-E

Wall-mountable Sinks



HWB-E

Drop-In Sinks



Tight On Space? Try Our Space Saver Handsinks



HSAN-10-F*
Basic SpaceSaver



HSAND-10-F
SpaceSaver with
Deck Mount Faucet



HSAN-10-F-DS*
SpaceSaver with Deck
Mount Soap Dispenser



HSANT-FS
SpaceSaver with
19" Backsplash and Skirt

Our Space Saver
Hand Sinks are
only 12" from side
to side!!

Lavatory Sinks with Marine Edge

All units have a marine edge and come standard with gooseneck spout faucet, soap dispenser and basket drain.



W1916-FA
Wall Mounted



W1916
Wall mounted,
knee valve operation



P1916
Pedestal mounted,
foot pedal valve operation



P1916FE
Pedestal mounted,
electronic-eye operation

MICROGARD®



*MICROGARD® available for these hand sinks.
Add -MG to model number.



100 Industrial Boulevard, Clayton, DE 19938-8903 USA | Phone: 302-653-3000 | www.eaglegrp.com

Disclaimer: MICROGARD® is a second line of defense. In keeping with good hygiene practices, clean this product as usual. The protection will not wash out, while organic bactericides may.*

*MICROGARD® does not protect users or others against bacteria, viruses, germs or other disease organisms. Always clean this product thoroughly after each use.

Hand Sinks

with Towel and/or Soap Dispensers

These wall mounted sinks come standard with towel dispenser designed to accommodate 4" x 10" C-fold disposable paper towels; and/or 16-oz. soap dispenser. "Z" wall mount bracket, drain and faucet also included. Basket drain and lever drain standard with crumb cup.



HSA-10-FDP*
Standard Model



HSA-10-FDPS*
Includes Skirt



HSA-10-FLDP
With Lever Drain



HSA-10-FDPK
Knee Operated Pedal Valves



HSA-10-FODP
With Lever Drain with Overflow



HSA-10-F-DS*
Deck Mount Soap Dispenser



HSA-10-FWLDP-LRS
Wrist Handles & Side Splashes

MICROGARD®

*MICROGARD® available for these hand sinks.
Add -MG to model number.



100 Industrial Boulevard, Clayton, DE 19938-8903 USA | Phone: 302-653-3000 | www.eaglegrp.com

Disclaimer: MICROGARD® is a second line of defense. In keeping with good hygiene practices, clean this product as usual. The protection will not wash out, while organic bactericides may.*

*MICROGARD® does not protect users or others against bacteria, viruses, germs or other disease organisms. Always clean this product thoroughly after each use.

Touch Free Handwashing System

Making Handwashing Easier & Faster

Eagle's HFL-5000 Touch-Free Handwashing Systems offer the ultimate hands-free combination of components to meet every sanitation requirement. The Eagle HFL-5000 hand washing system is protected by a MICROGARD® antimicrobial coating, and its users don't touch a thing – the soap dispenser, faucet and paper towel dispenser are all touch-less.

HFL-5000

Standard Model with
Waste Receptacle

HFL-5000-S

Standard Model with
Skirt (No Waste Receptacle)

HFL-5000-LRS

With Waste Receptacle
and End Splashes

Each HFL model includes the following:

- Eagle Hand Sink with MICROGARD® Protection
- Automated Paper Towel Dispenser
- Splash-mounted Gooseneck Faucet with Electronic Eye Sensor
- Hands-free Sanitizing Dispenser
- Hands-free Soap Dispenser
- Glove Rack with Single Service Gloves
- Soft Bristle White Nail Brush with Backsplash Mounted Holder

Link to video and more information!

<http://handwashingforlife.com/resources/integrated-solutions/plan-build-equip/hand-sink>

See Core Handwashing Technique and

Download Free Core Handwashing Poster:

<http://handwashingforlife.com/handsonsystem/server-easy-hands/training/core-handwash>

MICROGARD®



Eagle Group is a proud partner with



handwashingforlife®

Learn more about our partnership

100 Industrial Boulevard, Clayton, DE 19938-8903 USA | Phone: 302-653-3000 | www.eaglegrp.com

Disclaimer: MICROGARD® is a second line of defense. In keeping with good hygiene practices, clean this product as usual. The protection will not wash out, while organic bactericides may.*

*MICROGARD® does not protect users or others against bacteria, viruses, germs or other disease organisms. Always clean this product thoroughly after each use.

Hand Sinks with Battery Power

These sinks feature a battery-powered electronic-eye faucet which operates on four "AA" batteries (included). Also features a built-in "low battery" indicator light. All units come with #342938 Y-inlet non-adjustable mixing valve. Water temperature, #326015 temperature adjustment valve is required.



HSA-10-FE-B-DS*
Deck Mount Soap Dispenser



HSAN-10-FE-B-DS
Space-Saver Model



HSAP-14-ADA-FE-B
Towel Dispenser & Skirt



HSA-10-FE-B-NB-MG
Nail Brush & Standard
MICROGARD® Sink Bowl



U.S. Patent
#5,732,422
HSA-10-FE-B-T-NB-MG
Patented Waste Receptacle
& MICROGARD® Sink Bowl



U.S. Patent
#5,732,422
HSA-10-FDPEE-B-T*
Towel Dispenser & Waste Receptacle

MICROGARD®

*MICROGARD® available for these hand sinks.
Add -MG to model number.



100 Industrial Boulevard, Clayton, DE 19938-8903 USA | Phone: 302-653-3000 | www.eaglegrp.com

Disclaimer: MICROGARD® is a second line of defense. In keeping with good hygiene practices, clean this product as usual. The protection will not wash out, while organic bactericides may.*

*MICROGARD® does not protect users or others against bacteria, viruses, germs or other disease organisms. Always clean this product thoroughly after each use.



Profit from the Eagle Advantage®

Hand Sinks with AC Power

AC Power: Electronic “eye” sensor beam (adjustable from 3” to 12”) activates water flow. Requires 120-volt, 15-amp electric. 120-volt adapter included. All units come with #342938 Y-inlet non-adjustable mixing valve.

For regulating water temperature, #326015 temperature adjustment valve is required. All units except #HSA-10-FA-PE come with “Z” wall mount bracket. All drains come with crumb cup.



HSA-10-FE*
Standard Model



HSA-10-FOE
Lever Drain with Overflow



HSA-10-FA-PE*
Pedestal Mount



HSA-10-FDPE*
Soap & Towel Dispenser



HSA-10-FODPE
Lever Drain with Overflow



HSA-10-FDPEE*
Electronic Soap Dispenser

Hand Sinks with Eyewash—ADA and OSHA compliant

Introducing Eagle’s newest addition: The Hand Sink with Built-In Eyewash! The unit’s design saves space and fits easily into any work environment. Eyewash unit operates quickly by pulling swing arm down 90° over sink. Vandal-resistant ceramic valve limits wear and tear on moving parts, providing dependability and long lasting performance. Safe, steady water flow under varying water supply conditions, from 30 to 90 PSI, is assured by integral flow control in the sprayhead assembly. Eyewash spray heads contain an antimicrobial agent to protect the spray heads.



HSAP-10-EYE
Splash Mount
Eye Wash



HSAP-14-EYE
Deck-Mount
Eye Wash

MICROGARD®



*MICROGARD® available for these hand sinks.
Add -MG to model number.

100 Industrial Boulevard, Clayton, DE 19938-8903 USA | Phone: 302-653-3000 | www.eaglegrp.com

Disclaimer: MICROGARD® is a second line of defense. In keeping with good hygiene practices, clean this product as usual. The protection will not wash out, while organic bactericides may.*

*MICROGARD® does not protect users or others against bacteria, viruses, germs or other disease organisms. Always clean this product thoroughly after each use.



Hand Sinks with Factory Installed Side Splashes

Eagle's side splash options include pre-configured hand sink models with side splashes, a factory installed side splash option for other hand sink models (by adding suffix -LRS to model number) and an adhesive field installation option.



HSA-10-F-LRS
Standard Model



HSAN-10-F-LRS
Space Saver Model



HSA-10-FTWS-LRS
Tubular Wall Brackets



HSA-10-FDPE-LRS
Battery Powered E/E,
Towel & Soap Dispenser

Side Splash Options For Eagle Hand Sinks



In addition to pre-configured hand sink models, Eagle offers splash options for other hand sinks. Both factory or field installed.

Special Purpose Sinks ADA Compliant



HSAP-14-ADA-FE-B
Towel Dispenser & Skirt
with Electronic Eye Faucet



HSAP-14-ADA-FW
Towel Dispenser & Skirt
with Wrist Handles



HSAP-14-FW
Wall Brackets and
Wrist Handles



100 Industrial Boulevard, Clayton, DE 19938-8903 USA | Phone: 302-653-3000 | www.eaglegrp.com

Disclaimer: MICROGARD® is a second line of defense. In keeping with good hygiene practices, clean this product as usual. The protection will not wash out, while organic bactericides may.*

*MICROGARD® does not protect users or others against bacteria, viruses, germs or other disease organisms. Always clean this product thoroughly after each use.



Hand Sink Accessories and Replacements

Eagle offers a variety of hand sink accessories including:

- Towel/Soap Dispensers
 - Soap Dispensers
- Towel Dispensers
 - Side Splashes
 - Drains
 - Valves
 - Faucets



Stainless Steel Hand Sink End Splashes



Stainless Steel Skirt Assemblies



Foot and Knee Pedal Valves



Dispensers

Stainless Steel Wall Brackets



Nail Brush & Nail Brush Holder



Side Splash Self-adhesive



Can be used for Right (R) or Left (L) application. (For field installation).

HSA-SSK
6 1/2" Splash



100 Industrial Boulevard, Clayton, DE 19938-8903 USA | Phone: 302-653-3000 | www.eaglegrp.com

Disclaimer: MICROGARD® is a second line of defense. In keeping with good hygiene practices, clean this product as usual. The protection will not wash out, while organic bactericides may.*

*MICROGARD® does not protect users or others against bacteria, viruses, germs or other disease organisms. Always clean this product thoroughly after each use.



Mop Sinks–Floor Mount for Ease of Use

Eagle mop sinks feature deep-drawn one piece seamless heavy gauge type 300 stainless steel construction, using state-of-the-art hydraulic presses. Exclusive anti-splash double-offset “V” edge prevents spillage. Full skirt allows for tight sanitary seal.



F1916

19" x 16", standard depth,
8" deep



F1916-12

19" x 16", added depth,
12" deep



F2820

28" x 20", standard depth,
8" deep



F2820-12

28" x 20", added depth,
12" deep

Corner Mop Sinks– with Drop Front Edge & with Flush Front Edge

Constructed of type 304 stainless steel, with 8" or 12" deep fabricated bowl with drop edge. Includes full apron and drain with flat strainer plate. Corner design saves valuable space and drop front edge facilitates bucket dumping.



F2121-8-CNR
Flush Front Edge



F2121-8-CDE
Drop Front Edge

Mop Sink Cabinets–Conveniently Combines Sink & Storage

Eagle mop sink cabinets incorporate cabinet storage with our deep-drawn one piece seamless heavy gauge, heavy duty stainless steel cabinet body features an open back which allows cabinet to envelop standard wall mounted service faucet, spray hose and spray hose bracket long with mop holder.

F1916VSCS

Single width cabinet



F1916-VSCS-DL

Double width cabinet with
mop sink on left

F1916-VSCS-DR

Double width cabinet with
mop sink on left



100 Industrial Boulevard, Clayton, DE 19938-8903 USA | Phone: 302-653-3000 | www.eaglegrp.com

Disclaimer: MICROGARD® is a second line of defense. In keeping with good hygiene practices, clean this product as usual. The protection will not wash out, while organic bactericides may.*

*MICROGARD® does not protect users or others against bacteria, viruses, germs or other disease organisms. Always clean this product thoroughly after each use.

More Sink Solutions From Eagle

Sinks to Meet Every Need

Coved Corner Sinks

314, 414, 412 Series



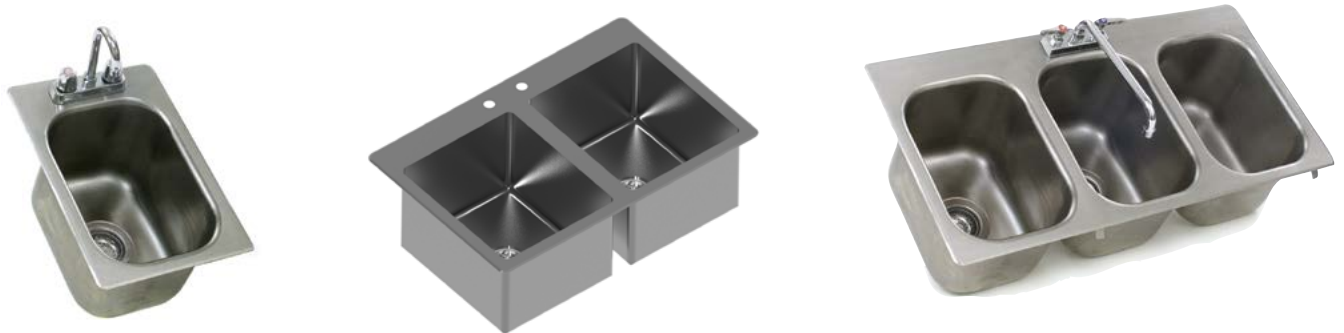
Utility Sinks



Floor Troughs and Drains



Counter Drop-In Sinks



100 Industrial Boulevard, Clayton, DE 19938-8903 USA | Phone: 302-653-3000 | www.eaglegrp.com



Disclaimer: MICROGARD® is a second line of defense. In keeping with good hygiene practices, clean this product as usual. The protection will not wash out, while organic bactericides may.*

*MICROGARD® does not protect users or others against bacteria, viruses, germs or other disease organisms. Always clean this product thoroughly after each use.

More Sink Solutions From Eagle- Sinks to Meet Every Need

Heavy Duty Sinks

SPEC-MASTER® FN Series 



Corner Sinks

314 Series 



Convenience Store Sinks

310/312 Series 



Custom Sinks Also Available

Eagle SpecFAB® Division Offers Custom Capabilities

To request a quotation, please contact
quotes@eaglegrp.com



MICROGARD®

Eagle Group is a proud partner with
 **handwashingforlife®**
Learn more about our partnership

1-800-441-8440

EAGLE®
GROUP

Profit from the Eagle Advantage®