

# Laboratory Wall Shelves

## ASSEMBLY INSTRUCTIONS

### CAUTION

INSPECT CONTENTS IMMEDIATELY AND FILE CLAIM WITH DELIVERING CARRIER FOR ANY DAMAGE. **SAVE YOUR BOX AND ALL PACKING MATERIALS.** YOU ARE RESPONSIBLE FOR DAMAGE TO YOUR UNIT IF RETURNED IMPROPERLY PACKED.

Thank you for your purchase. Before assembly, read this instruction manual carefully. After reading, be sure to store this instruction in a safe place, should it be needed for future reference.

#### Tools Needed:

- Level
- Drill and 1/8" drill bit
- Tape measure
- Screwdriver or driver bit for hardware\*

#### Before assembly:

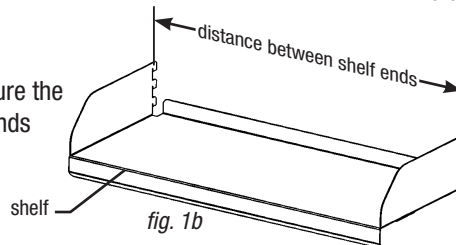
- Determine the area where the wall shelf will be mounted .
- Verify that you have sufficient structural support in the wall to be able to properly hold the shelf and its contents.
- Depending on the wall surface, use the appropriate wall mounting hardware\*

**IMPORTANT NOTE:** Depending on construction of wall, wall shelves should be attached to wall studs, in-wall grounds (wall backing) of plywood or sheet metal, or solid part of brick or concrete wall with appropriate fasteners. Failure to use appropriate fasteners could result in collapse and personal injury. Eagle Group cannot be held responsible for failure of the device or any other devices due to improper installation. Also, it is your responsibility to make certain the mounting surface and method of mounting are suitable to support the anticipated weight which will be placed on this unit.

### Step 1: Install uprights to wall.

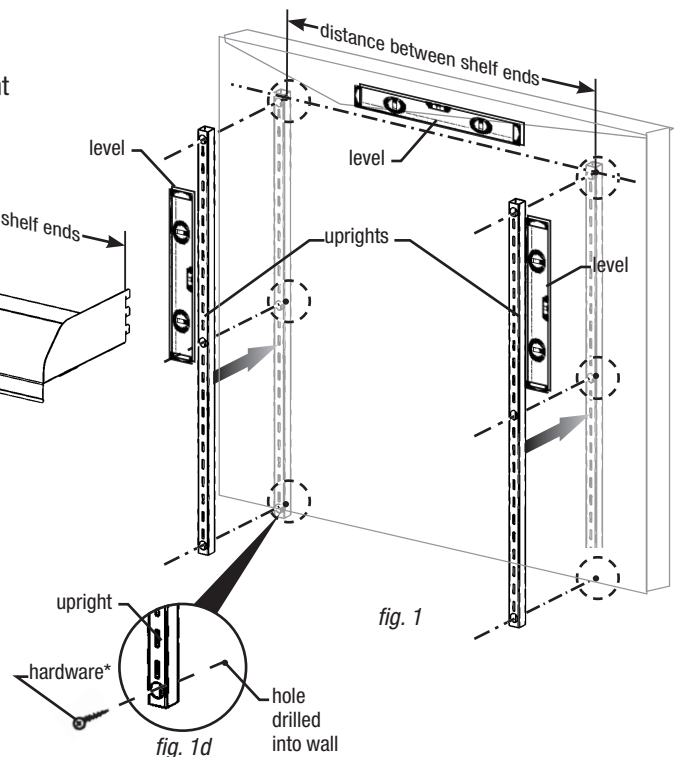
- a. Using a level to ensure straightness (see *fig. 1*), hold first upright up to the wall. Mark holes, then set aside upright. Drill holes.

- b. Use a tape measure to measure the distance between the shelf ends (see *fig. 1b*).



- c. Using the measurement between the shelf ends, mark top hole for the second upright. Make sure it is level with the top hole of the first upright (see *fig. 1*). Once level, use the second upright to mark the remaining holes. Make sure the distance between middle and bottom holes of each upright are the same as the distance between the top holes. Drill holes.

- d. Affix both uprights to the wall with appropriate hardware\* (see *fig. 1d*).



\* Wall mounting hardware not included

(continued on back page)

EG10110 Revised 01/24



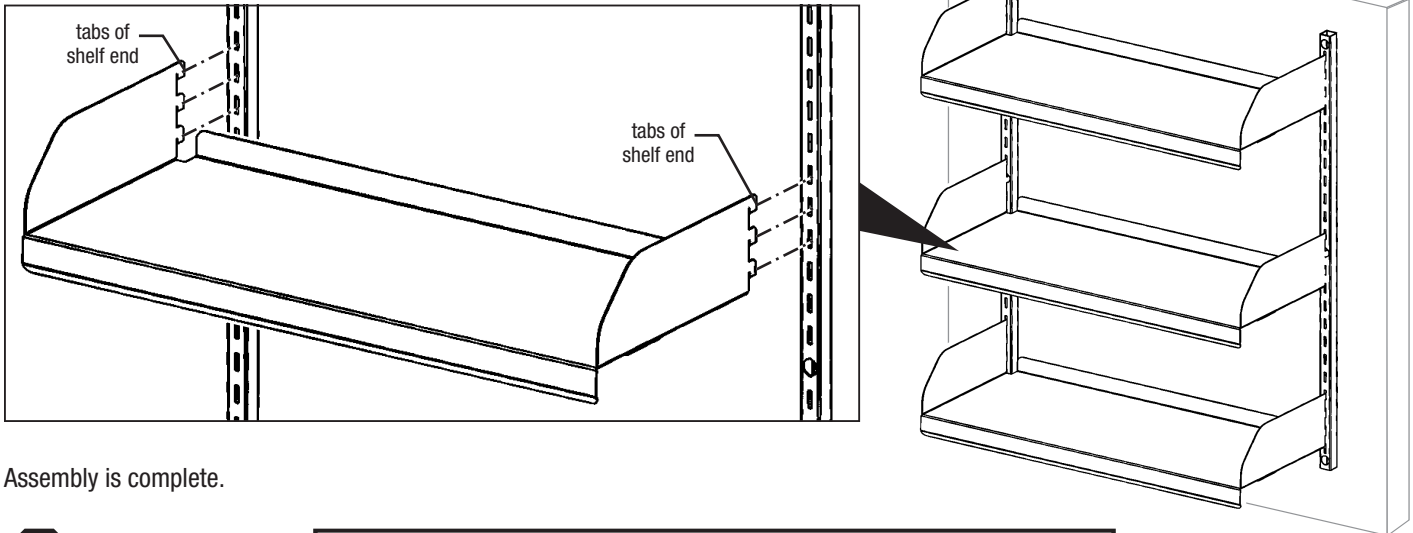
- 100 Industrial Boulevard, Clayton, Delaware 19938-8903 U.S.A.
- Phone: 302/653-3000 • 800/441-8440 • Fax: 302/653-2065
- www.eaglegrp.com • www.eaglemhc.com

# Laboratory Wall Shelves

## ASSEMBLY INSTRUCTIONS

### Step 2: Affix shelves to uprights.

- Hook tabs of shelf ends into slotted uprights at desired height.
- Repeat on remaining shelves.



Assembly is complete.



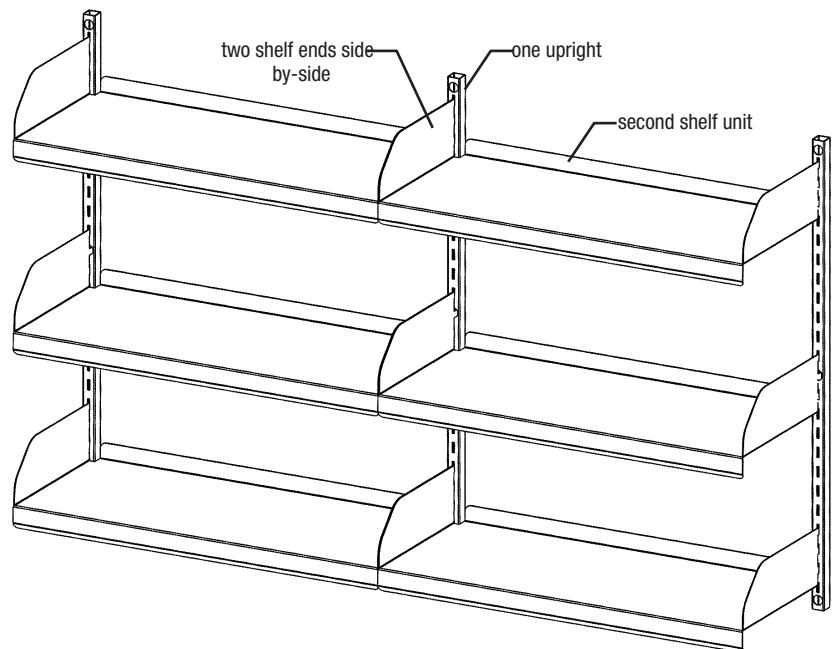
Shelf not to exceed a maximum of 150 lbs. evenly distributed

### To create a shelf run...

Tabs of TWO shelf ends, side-by-side, can fit inside the slots of one upright. This allows for a second shelf unit to be added onto the first unit, creating a shelf run.

For assembly of an adjacent unit, follow **Steps 1b, c, & d,** and **Step 2.**

Assembly is complete.



- 100 Industrial Boulevard, Clayton, Delaware 19938-8903 U.S.A.
- Phone: 302/653-3000 • 800/441-8440 • Fax: 302/653-2065
- [www.eaglegrp.com](http://www.eaglegrp.com) • [www.eaglemhc.com](http://www.eaglemhc.com)