



Profit from the Eagle Advantage®

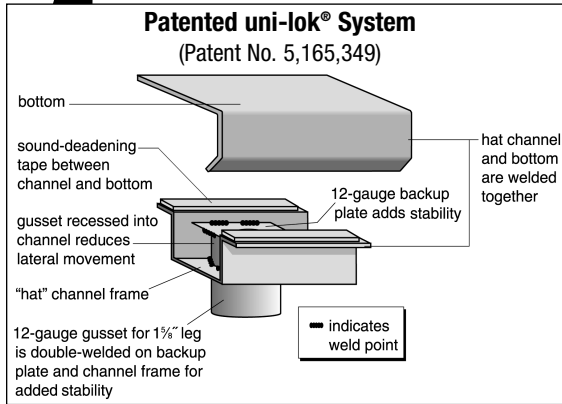
Specification Sheet

Short Form Specifications

Eagle Spec-Master® Marine Counter Edge Cabinets with Backsplash, model _____. Top is 14/304 stainless steel, sides and back are heavy gauge stainless steel. Open front, stainless steel sliding doors, or stainless steel hinged doors. Marine counter edge on front and sides, 4½" backsplash at rear. Constructed with uni-lok® patented gusset system, with the gussets recessed into channels, to reduce lateral movement. 1½" O.D. stainless steel tubular legs with adjustable stainless steel bullet feet.



cabinet with sliding doors



Item No.: _____
 Project No.: _____
 S.I.S. No.: _____

Spec-Master® Marine Counter Edge Cabinets with Backsplash

MODELS:

- | | | |
|--|--|---|
| <input type="checkbox"/> OB2436SEM-BS | <input type="checkbox"/> CB2436SEM-BS | <input type="checkbox"/> CBH2436SEM-BS |
| <input type="checkbox"/> OB2448SEM-BS | <input type="checkbox"/> CB2448SEM-BS | <input type="checkbox"/> CBH2448SEM-BS |
| <input type="checkbox"/> OB2460SEM-BS | <input type="checkbox"/> CB2460SEM-BS | <input type="checkbox"/> CBH2460SEM-BS |
| <input type="checkbox"/> OB2472SEM-BS | <input type="checkbox"/> CB2472SEM-BS | <input type="checkbox"/> CBH2472SEM-BS |
| <input type="checkbox"/> OB2484SEM-BS | <input type="checkbox"/> CB2484SEM-BS | <input type="checkbox"/> CBH2484SEM-BS |
| <input type="checkbox"/> OB2496SEM-BS | <input type="checkbox"/> CB2496SEM-BS | <input type="checkbox"/> CBH2496SEM-BS |
| <input type="checkbox"/> OB24120SEM-BS | <input type="checkbox"/> CB24120SEM-BS | <input type="checkbox"/> CBH24120SEM-BS |
| <input type="checkbox"/> OB3036SEM-BS | <input type="checkbox"/> CB3036SEM-BS | <input type="checkbox"/> CBH3036SEM-BS |
| <input type="checkbox"/> OB3048SEM-BS | <input type="checkbox"/> CB3048SEM-BS | <input type="checkbox"/> CBH3048SEM-BS |
| <input type="checkbox"/> OB3060SEM-BS | <input type="checkbox"/> CB3060SEM-BS | <input type="checkbox"/> CBH3060SEM-BS |
| <input type="checkbox"/> OB3072SEM-BS | <input type="checkbox"/> CB3072SEM-BS | <input type="checkbox"/> CBH3072SEM-BS |
| <input type="checkbox"/> OB3084SEM-BS | <input type="checkbox"/> CB3084SEM-BS | <input type="checkbox"/> CBH3084SEM-BS |
| <input type="checkbox"/> OB3096SEM-BS | <input type="checkbox"/> CB3096SEM-BS | <input type="checkbox"/> CBH3096SEM-BS |
| <input type="checkbox"/> OB30120SEM-BS | <input type="checkbox"/> CB30120SEM-BS | <input type="checkbox"/> CBH30120SEM-BS |

Tabletop

- 14 gauge type 304 stainless steel.
- Reinforced with full length "hat" channel support.
- Marine counter edge set in 1" (25mm), on front and sides, designed to retard spillage.
- 1" x 4½" (25 x 114mm) full-length backsplash—optional 2" x 10½" (51 x 267mm) high backsplash* available.

Cabinet

- Cabinet body is heavy gauge stainless steel.
- Available with open front, or with 20 gauge stainless steel sliding or hinged doors**.
- Bottom panel features an offset designed to retard spillage.

Legs

- uni-lok® leg/gusset channel assembly (patent #5,165,349).
- Adjustable stainless bullet feet—1" (25mm) adjustment.

Options / Accessories

- 10½" (267mm) backsplash*
- Center shelf***

* To order, replace suffix "BS" with suffix "-10BS". Example: CB3036SEM-10BS

** Cabinets 84" (2134mm) and longer have two sets of sliding or hinged doors.

*** To order center shelf, add suffix "-CS". Example: CB3036SEM-BS-CS

EAGLE GROUP

100 Industrial Boulevard, Clayton, DE 19938-8903 USA
 Phone: 302-653-3000 • 800-441-8440 • Fax: 302-653-2065
 www.eaglegrp.com
 www.eaglehmc.com

For custom configuration or fabrication needs, contact our SpecFAB® Division.

Phone: 302-653-3000 • Fax: 302-653-2065 • e-mail: quotes@eaglegrp.com



EG10.33C Rev. 10/23

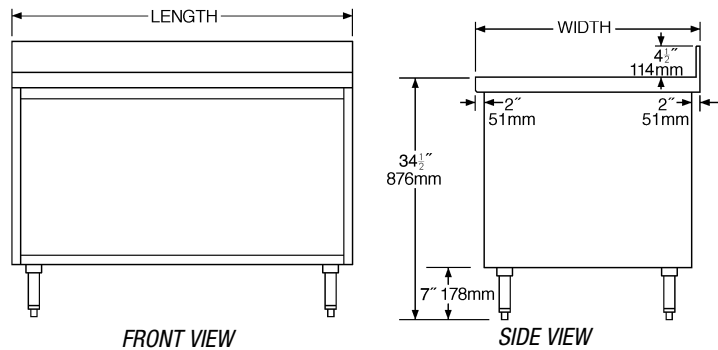
Spec sheets available for viewing, printing or downloading from our online literature library at our websites



Profit from the Eagle Advantage®

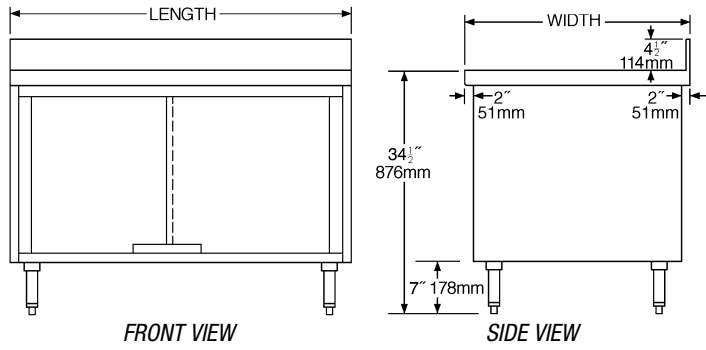
Item No.: _____
 Project No.: _____
 S.I.S. No.: _____

Spec-Master® Marine Counter Edge Cabinets with Open Front



model #	# of legs	width in. mm	length in. mm	weight lbs. kg
OB2436SEM-BS	4	24" 610	36" 914	133 60.3
OB2448SEM-BS	4	24" 610	48" 1219	161 73.0
OB2460SEM-BS	4	24" 610	60" 1524	202 91.6
OB2472SEM-BS	4	24" 610	72" 1829	243 110.2
OB2484SEM-BS	6	24" 610	84" 2134	284 128.8
OB2496SEM-BS	6	24" 610	96" 2438	326 147.9
OB24120SEM-BS	6	24" 610	120" 3048	390 176.9
OB3036SEM-BS	4	30" 762	36" 914	137 62.1
OB3048SEM-BS	4	30" 762	48" 1219	167 75.8
OB3060SEM-BS	4	30" 762	60" 1524	201 91.2
OB3072SEM-BS	4	30" 762	72" 1829	251 113.9
OB3084SEM-BS	6	30" 762	84" 2134	299 135.6
OB3096SEM-BS	6	30" 762	96" 2438	344 156.0
OB30120SEM-BS	6	30" 762	120" 3048	438 198.7

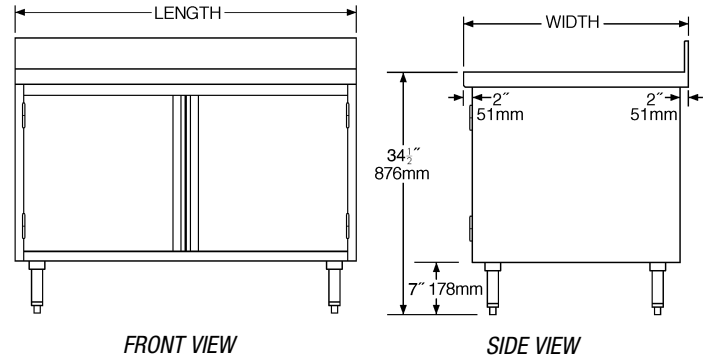
Spec-Master® Marine Counter Edge Cabinets with Sliding Doors



model #	# of legs	width in. mm	length in. mm	weight lbs. kg
CB2436SEM-BS	4	24" 610	36" 914	139 63.1
CB2448SEM-BS	4	24" 610	48" 1219	171 77.6
CB2460SEM-BS	4	24" 610	60" 1524	214 97.1
CB2472SEM-BS	4	24" 610	72" 1829	256 116.1
CB2484SEM-BS*	6	24" 610	84" 2134	304 137.9
CB2496SEM-BS*	6	24" 610	96" 2438	343 155.6
CB24120SEM-BS*	6	24" 610	120" 3048	390 176.9
CB3036SEM-BS	4	30" 762	36" 914	143 64.9
CB3048SEM-BS	4	30" 762	48" 1219	174 78.9
CB3060SEM-BS	4	30" 762	60" 1524	221 100.2
CB3072SEM-BS	4	30" 762	72" 1829	264 119.8
CB3084SEM-BS*	6	30" 762	84" 2134	319 144.7
CB3096SEM-BS*	6	30" 762	96" 2438	355 161.0
CB30120SEM-BS*	6	30" 762	120" 3048	458 207.8

* Note: Worktables 84" (2134mm) and longer have two sets of doors.

Spec-Master® Marine Counter Edge Cabinets with Hinged Doors



model #	# of legs	width in. mm	length in. mm	weight lbs. kg
CBH2436SEM-BS	4	24" 610	36" 914	139 63.1
CBH2448SEM-BS	4	24" 610	48" 1219	171 77.6
CBH2460SEM-BS	4	24" 610	60" 1524	214 97.1
CBH2472SEM-BS	4	24" 610	72" 1829	256 116.1
CBH2484SEM-BS*	6	24" 610	84" 2134	304 137.9
CBH2496SEM-BS*	6	24" 610	96" 2438	343 155.6
CBH24120SEM-BS*	6	24" 610	120" 3048	390 176.9
CBH3036SEM-BS	4	30" 762	36" 914	143 64.9
CBH3048SEM-BS	4	30" 762	48" 1219	174 78.9
CBH3060SEM-BS	4	30" 762	60" 1524	221 100.2
CBH3072SEM-BS	4	30" 762	72" 1829	264 119.8
CBH3084SEM-BS*	6	30" 762	84" 2134	319 144.7
CBH3096SEM-BS*	6	30" 762	96" 2438	355 161.0
CBH30120SEM-BS*	6	30" 762	120" 3048	458 207.8

* Note: Worktables 84" (2134mm) and longer have two sets of doors.

EAGLE GROUP
 100 Industrial Boulevard, Clayton, DE 19938-8903 USA
 Phone: 302-653-3000 or 800-441-8440 • Fax: 302-653-2065
 www.eaglegrp.com • www.eaglehmc.com

Printed in U.S.A.
 ©2023 by Eagle Group
 Rev. 10/23

Spec sheets available for viewing, printing or downloading from our online literature library at our websites

Although every attempt has been made to ensure the accuracy of the information provided, we cannot be held responsible for typographical or printing errors. Information and specifications are subject to change without notice. Please confirm at time of order.