

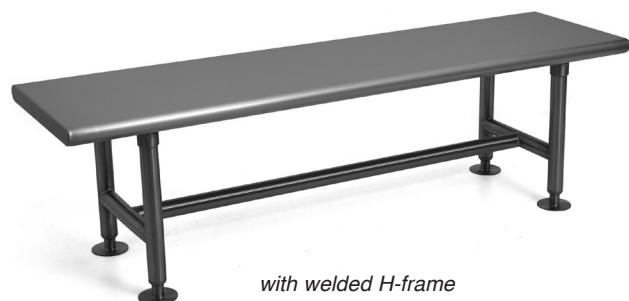


Profit from the Eagle Advantage®

Specification Sheet

Short Form Specifications

Eagle EL Series Heavy Duty Gowning Bench, model _____, 16"-wide 14 gauge type 304 series stainless steel. Flanged foot plates. 24" to 96" length. Front and rear feature a rolled edge, with 90° downturn on each end.



with welded H-frame



with adjustable 4-sided frame

Options / Accessories

☐ Shelf section (for units with 4-side frame only)

EAGLE GROUP

100 Industrial Boulevard, Clayton, DE 19938-8903 USA

Phone: 302-653-3000 • 800-441-8440 • Fax: 302-653-2065

www.eaglegrp.com

www.eaglehmc.com

For custom configuration or fabrication needs, contact our **SpecFAB®** Division.

Phone: 302-653-3000 • Fax: 302-653-2065 • e-mail: quotes@eaglegrp.com

Item No.: _____
Project No.: _____
S.I.S. No.: _____

EL Series Heavy Duty Solid Gowning Benches

MODELS:

☐ ELGB1624*

☐ ELGB1630*

☐ ELGB1636*

☐ ELGB1648*

☐ ELGB1660*

☐ ELGB1672*

☐ ELGB1684*

☐ ELGB1696*

☐ ELGB-TRAY

* See chart on back for complete model numbers.

Design and Construction Features

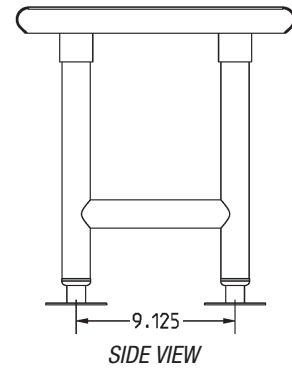
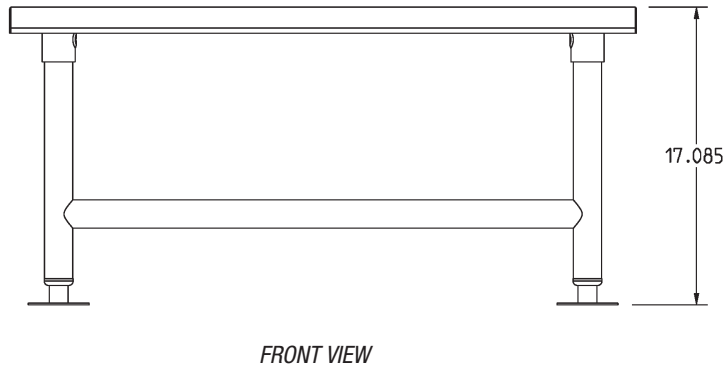
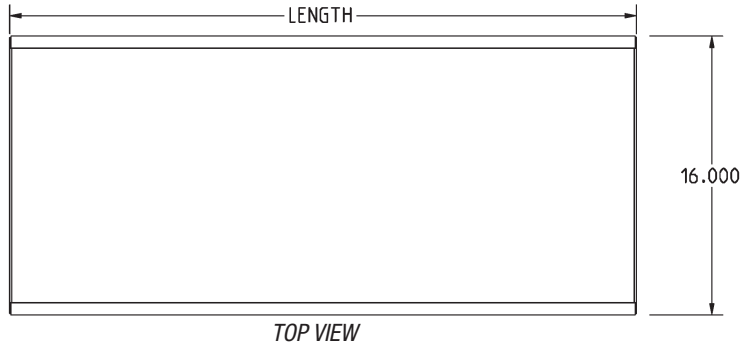
- 14 gauge type 304 stainless steel construction.
- Choice of welded or adjustable H-frame or 4-sided frame.
- Rolled edge at front and rear of seat, with ends turned down at 90°.
- Hat channels on underside of seat for added strength.
- Stainless steel legs and flanged footplates.
- 1 $\frac{5}{8}$ " (41mm)-diameter legs.
- Welded frames feature 1 $\frac{5}{8}$ " (41mm)-diameter crossbracing.
- Adjustable frames feature 1 $\frac{1}{4}$ " (32mm)-diameter crossbracing and heavy duty aluminum fittings.
- 17" (432mm) overall height on all units.





Item No.: _____
 Project No.: _____
 S.I.S. No.: _____

EL Series Heavy Duty Solid Gowning Benches



(model with welded 4-sided frame shown)

width		length*		weight		...with Adjustable Frame		...with Welded Frame	
						WITH 4-SIDED FRAME	WITH H-FRAME	WITH 4-SIDED FRAME	WITH H-FRAME
in.	mm	in.	mm	lbs.	kg	model #	model #	model #	model #
16"	406	24"	610	20	9.1	ELGB1624-4	ELGB1624-H	ELGB1624-4W	ELGB1624-HW
16"	406	30"	762	26	11.8	ELGB1630-4	ELGB1630-H	ELGB1630-4W	ELGB1630-HW
16"	406	36"	914	33	15.0	ELGB1636-4	ELGB1636-H	ELGB1636-4W	ELGB1636-HW
16"	406	48"	1219	40	18.1	ELGB1648-4	ELGB1648-H	ELGB1648-4W	ELGB1648-HW
16"	406	60"	1524	47	21.3	ELGB1660-4	ELGB1660-H	ELGB1660-4W	ELGB1660-HW
16"	406	72"	1829	54	24.5	ELGB1672-4	ELGB1672-H	ELGB1672-4W	ELGB1672-HW
16"	406	84"	2134	61	27.7	ELGB1684-4	ELGB1684-H	ELGB1684-4W	ELGB1684-HW
16"	406	96"	2438	70	31.8	ELGB1696-4	ELGB1696-H	ELGB1696-4W	ELGB1696-HW

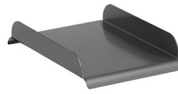
* 96"-long units feature six (6) legs. All other lengths have four (4) legs.

Optional Shelf Section

10" x 12" (254 x 305mm). For units with 4-Sided Frame only.

model #

ELGB-TRAY



shelf section

for gowning bench length	quantity of shelf sections can be used
in.	mm
36"	914
48"	1219
60"	1524
72"	1829

EAGLE GROUP

100 Industrial Boulevard, Clayton, DE 19938-8903 USA

Phone: 302-653-3000 or 800-441-8440 • Fax: 302-653-2065

www.eaglegrp.com • www.eaglehmc.com

Printed in U.S.A.
 ©2024 by Eagle Group

Rev. 11/24

Spec sheets available for viewing, printing or downloading from our online literature library at our websites

Although every attempt has been made to ensure the accuracy of the information provided, we cannot be held responsible for typographical or printing errors. Information and specifications are subject to change without notice. Please confirm at time of order.