



Profit from the Eagle Advantage®

Specification Sheet

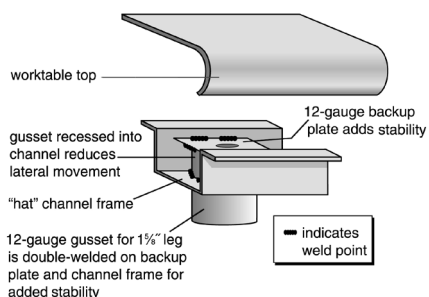
Short Form Specifications

Perforated 14 gauge type 304 worksurface with #4 brushed stainless steel finish. Perforations are $\frac{3}{4}$ "-diameter on 1" centers. Available with $1\frac{5}{8}$ " C-frame or H-frame tubular base, or with undershelf base. Uni-lok® gusset system. Stainless bullet feet adjustable to 1".



table shown with
H-frame base

Patented uni-lok® System (Patent No. 5,165,349)



Options / Accessories

- ☐ Welded construction C-frame
- ☐ Welded construction H-frame
- ☐ Casters
- ☐ Glides
- ☐ Foot Rest*
- ☐ Upgrade to type 316 stainless steel construction
(add suffix "-316". Ex: CRPT2424T-C-316)

* See spec sheet #EG04.14 for Foot Rest

EAGLE GROUP

100 Industrial Boulevard, Clayton, DE 19938-8903 USA
Phone: 302-653-3000 • 800-441-8440 • Fax: 302-653-2065

www.eaglegrp.com
www.eaglehmc.com

For custom configuration or fabrication needs, contact our SpecFAB® Division.

Phone: 302-653-3000 • Fax: 302-653-2065 • e-mail: quotes@eaglegrp.com

Item No.: _____
Project No.: _____
S.I.S. No.: _____

Cleanroom Tables with Brushed Stainless Perforated Tabletop

MODELS:

- | | | |
|--------------------------------------|--------------------------------------|--------------------------------------|
| <input type="checkbox"/> CRPT2424T-* | <input type="checkbox"/> CRPT3030T-* | <input type="checkbox"/> CRPT3636T-* |
| <input type="checkbox"/> CRPT2436T-* | <input type="checkbox"/> CRPT3036T-* | <input type="checkbox"/> CRPT3648T-* |
| <input type="checkbox"/> CRPT2448T-* | <input type="checkbox"/> CRPT3048T-* | <input type="checkbox"/> CRPT3660T-* |
| <input type="checkbox"/> CRPT2460T-* | <input type="checkbox"/> CRPT3060T-* | <input type="checkbox"/> CRPT3672T-* |
| <input type="checkbox"/> CRPT2472T-* | <input type="checkbox"/> CRPT3072T-* | <input type="checkbox"/> CRPT3684T-* |
| <input type="checkbox"/> CRPT2484T-* | <input type="checkbox"/> CRPT3084T-* | <input type="checkbox"/> CRPT3696T-* |
| <input type="checkbox"/> CRPT2496T-* | <input type="checkbox"/> CRPT3096T-* | |

* See chart on back for complete model numbers.

Design and Construction Features

- Heavy gauge type 304 all stainless steel construction.
- Tops are 14 gauge brushed stainless steel, reinforced with heavy gauge hat channels. Alcohol-wiped and cleanroom bagged.
- $1\frac{1}{2}$ " (38mm)-diameter, rolled down edges at front and rear.
- Ends turned down 90° at $1\frac{1}{2}$ " (38mm) providing for flush installations when required.
- Base assembly incorporates the "strength by design" patented uni-lok® (patent #5,165,349) stainless steel gusset system which is welded into hat channel, reducing lateral movement.
- Legs and crossbracing are 16 gauge $1\frac{5}{8}$ " (41mm)-diameter, with welded crossbracing front-to-back and choice of center or rear knocked-down crossbracing.
- Perforations are $\frac{3}{4}$ " (19mm)-diameter on 1" (25mm) centers to allow a minimum 40% laminar flow.
- Tables supplied with 1" (25mm) adjustable stainless steel bullet feet.
- All tables provided with stainless steel assembly hardware and are shipped knock-down.
- 35½" overall height.
- Custom sizes available.

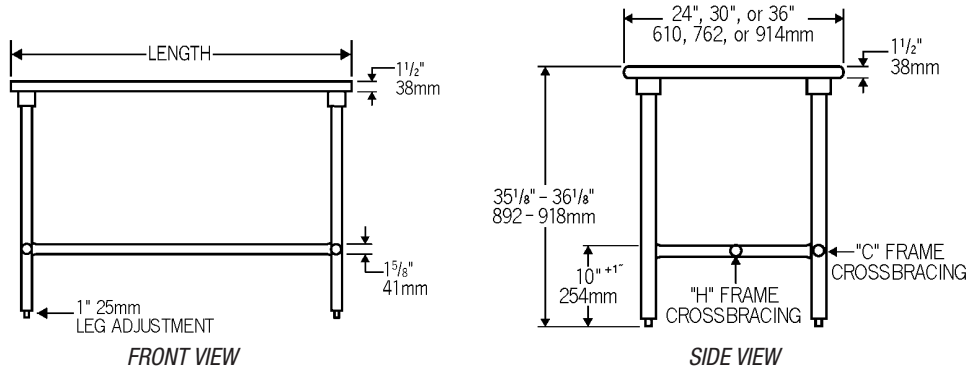




Profit from the Eagle Advantage®

Item No.: _____
 Project No.: _____
 S.I.S. No.: _____

Cleanroom Tables with Brushed Stainless Perforated Tabletop



			width		length		weight	
...with C-Frame Base model #	...with H-Frame Base model #	...with Undershef Base model #	in.	mm	in.	mm	lbs.	kg
CRPT2424T-C	CRPT2424T-H	CRPT2424T-US	24"	610	24"	610	32	14.5
CRPT2436T-C	CRPT2436T-H	CRPT2436T-US	24"	610	36"	914	50	22.7
CRPT2448T-C	CRPT2448T-H	CRPT2448T-US	24"	610	48"	1219	65	29.5
CRPT2460T-C	CRPT2460T-H	CRPT2460T-US	24"	610	60"	1524	70	37.8
CRPT2472T-C	CRPT2472T-H	CRPT2472T-US	24"	610	72"	1829	83	37.7
CRPT2484T-C	CRPT2484T-H	CRPT2484T-US	24"	610	84"	2134	95	43.1
CRPT2496T-C	CRPT2496T-H	CRPT2496T-US	24"	610	96"	2438	157	71.2
CRPT3030T-C	CRPT3030T-H	CRPT3030T-US	30"	762	30"	762	43	19.5
CRPT3036T-C	CRPT3036T-H	CRPT3036T-US	30"	762	36"	914	53	24.0
CRPT3048T-C	CRPT3048T-H	CRPT3048T-US	30"	762	48"	1219	73	33.1
CRPT3060T-C	CRPT3060T-H	CRPT3060T-US	30"	762	60"	1524	83	37.7
CRPT3072T-C	CRPT3072T-H	CRPT3072T-US	30"	762	72"	1829	105	47.6
CRPT3084T-C	CRPT3084T-H	CRPT3084T-US	30"	762	84"	2134	132	59.9
CRPT3096T-C	CRPT3096T-H	CRPT3096T-US	30"	762	96"	2438	158	71.7
CRPT3636T-C	CRPT3636T-H	CRPT3636T-US	36"	914	36"	914	74	33.6
CRPT3648T-C	CRPT3648T-H	CRPT3648T-US	36"	914	48"	1219	84	38.1
CRPT3660T-C	CRPT3660T-H	CRPT3660T-US	36"	914	60"	1524	88	39.9
CRPT3672T-C	CRPT3672T-H	CRPT3672T-US	36"	914	72"	1829	107	43.5
CRPT3684T-C	CRPT3684T-H	CRPT3684T-US	36"	914	84"	2134	183	83.0
CRPT3696T-C	CRPT3696T-H	CRPT3696T-US	36"	914	96"	2438	203	92.1

EAGLE GROUP

100 Industrial Boulevard, Clayton, DE 19938-8903 USA

Phone: 302-653-3000 or 800-441-8440 • Fax: 302-653-2065

www.eaglegrp.com • www.eaglehmc.com

Printed in U.S.A.
 ©2025 by Eagle Group

Rev. 01/25

Spec sheets available for viewing, printing or downloading from our online literature library at our websites

Although every attempt has been made to ensure the accuracy of the information provided, we cannot be held responsible for typographical or printing errors. Information and specifications are subject to change without notice. Please confirm at time of order.