



Profit from the Eagle Advantage®

# Specification Sheet

## Short Form Specifications

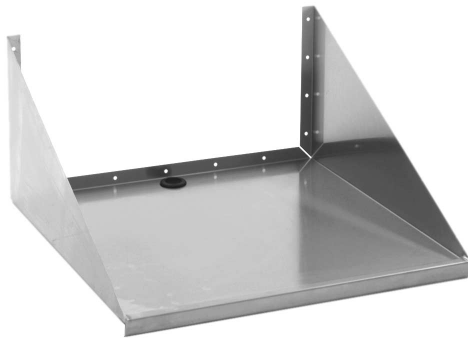
Eagle Equipment Shelf with Cord Cutout, model \_\_\_\_\_.  
Constructed of 18 gauge type 430 stainless steel, with a marine edge on front to prevent equipment from sliding off.

Item No.:	_____
Project No.:	_____
S.I.S. No.:	_____

## Equipment Shelves with Cord Cutout

### MODELS:

- MWS1824
- MWS2424



equipment shelf

### Design and Construction Features

- Space-saving wall mount design.
- Available in 18" or 24" (457 or 610mm) widths.
- Standard length is 24" (610mm).
- Heavy gauge stainless steel polished to #3 finish.
- Marine counter edge in front prevents equipment from sliding off.
- Hole with black rubber grommet, located toward the rear of shelf.

### EAGLE GROUP

100 Industrial Boulevard, Clayton, DE 19938-8903 USA  
 Phone: 302-653-3000 • 800-441-8440 • Fax: 302-653-2065  
[www.eaglegrp.com](http://www.eaglegrp.com)  
[www.eaglegrpnews.com](http://www.eaglegrpnews.com)  
[www.eaglemhc.com](http://www.eaglemhc.com)

For custom configuration or fabrication needs, contact our **SpecFAB® Division**.  
 Phone: 302-653-3000 • Fax: 302-653-2065 • e-mail: [quotes@eaglegrp.com](mailto:quotes@eaglegrp.com)



EG02.10M Rev. 06/23

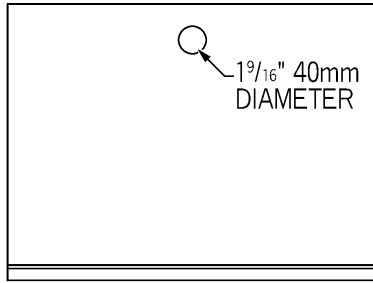
**Spec sheets available for viewing, printing or downloading from our online literature library at our websites**

*Eagle Foodservice Equipment, Eagle MHC, and SpecFAB® are divisions of Eagle Group. ©2023 by the Eagle Group*

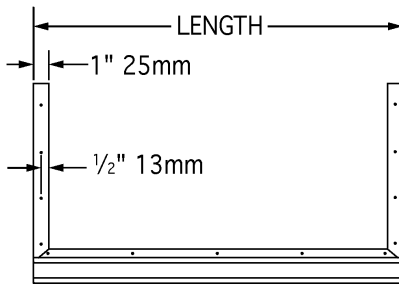


Item No.: \_\_\_\_\_  
 Project No.: \_\_\_\_\_  
 S.I.S. No.: \_\_\_\_\_

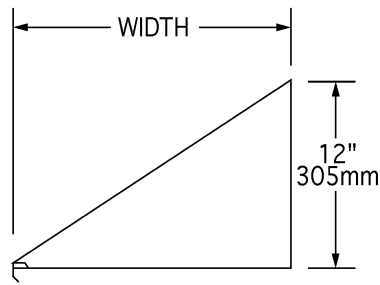
# Equipment Shelves with Cord Cutout



TOP VIEW



FRONT VIEW



SIDE VIEW

model #	width		length		weight	
	in.	mm	in.	mm	lbs.	kg
MWS1824	18"	457	24"	610	17	7.7
MWS2424	24"	610	24"	610	23	10.4

**EAGLE GROUP**  
 100 Industrial Boulevard, Clayton, DE 19938-8903 USA  
 Phone: 302-653-3000 or 800-441-8440 • Fax: 302-653-2065  
 www.eaglegrp.com • www.eaglegrpnews.com • www.eaglehmc.com

Printed in U.S.A.  
 ©2023 by Eagle Group  
 Rev. 06/23

**Spec sheets available for viewing, printing or downloading from our online literature library at our websites**

Although every attempt has been made to ensure the accuracy of the information provided, we cannot be held responsible for typographical or printing errors. Information and specifications are subject to change without notice. Please confirm at time of order.