



Profit from the Eagle Advantage®

# Specification Sheet

## Short Form Specifications

62% laminar flow through a wire shelf with a load capacity of 800 pounds. Chrome plated or electropolished stainless steel. 12" cantilevered overshelves with 1" built-in ledge. 33" working height.

Item No.:	_____
Project No.:	_____
S.I.S. No.:	_____

## Cleanroom Workstations

### MODELS:

- |                                   |                                    |                                     |
|-----------------------------------|------------------------------------|-------------------------------------|
| <input type="checkbox"/> WS2436*  | <input type="checkbox"/> MWS2448*  | <input type="checkbox"/> MWS2436WT* |
| <input type="checkbox"/> WS2448*  | <input type="checkbox"/> WS2436WT* | <input type="checkbox"/> WS2448WT*  |
| <input type="checkbox"/> MWS2436* | <input type="checkbox"/> WS2448WT* | <input type="checkbox"/> KBD-2*     |

\* See charts on back for complete model numbers.



basic wire top workstation



wire top workstation with two overshelves

### Basic Wire Top Units

- Up to 800 lbs. (363kg) load-bearing capacity.
- Chrome or stainless steel finish.
- 33" (838mm) overall height on stationary units; 39" (991mm) overall height on mobile units.
- 1" (25mm) square three-sided frame.
- Black split sleeves included.
- Shipped knocked down.

### Wire Top Units with Two Overshelves

- Up to 800 lbs. (363kg) load-bearing capacity.
- Chrome or stainless steel finish.
- 33" (838mm) working height on stationary units. 39" (991mm) working height on mobile units.
- 63" (1600mm) overall height on stationary units; 69" (1753mm) overall height on mobile units.
- Two full-length 12" (305mm)-wide cantilever wire overshelves.
- 1" (25mm) square three-sided frame.
- Black split sleeves included.
- Shipped knocked down.

### Optional Keyboard Stations

- 20½"-wide x 11½"-deep (521 x 292mm).
- Available in stainless steel or chrome finishes.
- Easily attaches to underside of wire top on all units.

Mobile Computer Workstations also available. See catalog sheet **EG01.04**.

### Options / Accessories

- Keyboard stations

### EAGLE GROUP

100 Industrial Boulevard, Clayton, DE 19938-8903 USA  
 Phone: 302-653-3000 • 800-441-8440 • Fax: 302-653-2065  
[www.eaglegrp.com](http://www.eaglegrp.com)  
[www.eaglegrpnews.com](http://www.eaglegrpnews.com)  
[www.eaglemhc.com](http://www.eaglemhc.com)

For custom configuration or fabrication needs, contact our **SpecFAB® Division**.  
 Phone: 302-653-3000 • Fax: 302-653-2065 • e-mail: [quotes@eaglegrp.com](mailto:quotes@eaglegrp.com)

EG04.10 Rev. 12/22

Spec sheets available for viewing, printing or downloading from our online literature library at our websites

Eagle Foodservice Equipment, Eagle MHC, and SpecFAB® are divisions of Eagle Group. ©2022 by the Eagle Group



Item No.: \_\_\_\_\_  
 Project No.: \_\_\_\_\_  
 S.I.S. No.: \_\_\_\_\_

# Cleanroom Workstations

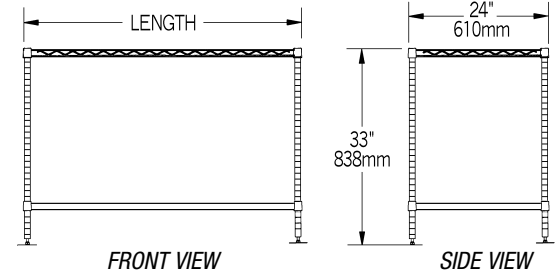
## Basic Wire Top Units

### Stationary Units

chrome model #	stainless steel model #	weight lbs.	weight kg	width* in.	width* mm	length* in.	length* mm
WS2436C	WS2436S	21	9.5	24"	610	36"	914
WS2448C	WS2448S	28	12.7	24"	610	48"	1219

### Mobile Units

chrome model #	stainless steel model #	weight lbs.	weight kg	width* in.	width* mm	length* in.	length* mm
MWS2436C	MWS2436S	29	13.2	24"	610	36"	914
MWS2448C	MWS2448S	36	16.3	24"	610	48"	1219



Note: stationary unit shown

\* Offered in any width or length of standard wire shelf (see catalog sheet #EG01.00). Call Customer Service for details.

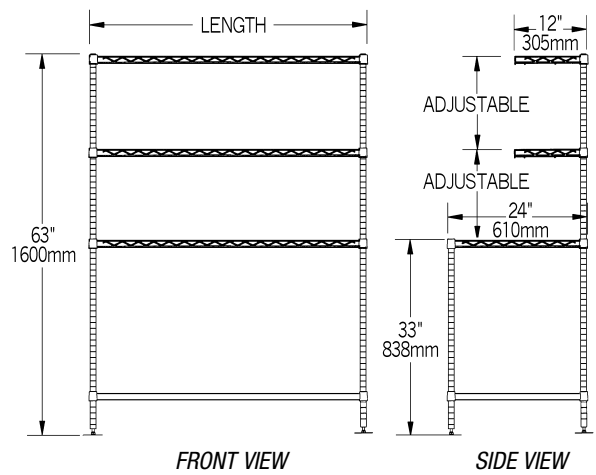
## Wire Top Units with Two Overshelves

### Stationary Units

chrome model #	stainless steel model #	weight lbs.	weight kg	width* in.	width* mm	length* in.	length* mm
WS2436WT	WS2436WT-S	45	20.4	24"	610	36"	914
WS2448WT	WS2448WT-S	53	24.0	24"	610	48"	1219

### Mobile Units

chrome model #	stainless steel model #	weight lbs.	weight kg	width* in.	width* mm	length* in.	length* mm
MWS2436WT	MWS2436WT-S	56	25.4	24"	610	36"	914
MWS2448WT	MWS2448WT-S	61	27.7	24"	610	48"	1219



Note: stationary unit shown

\* Offered in any width or length of standard wire shelf (see catalog sheet #EG01.00). Call Customer Service for details.

## Optional Keyboard Stations

chrome model #	stainless steel model #	weight lbs.	weight kg
KBD-2	KBD-2/SS	9	4.1



**EAGLE GROUP**  
 100 Industrial Boulevard, Clayton, DE 19938-8903 USA  
 Phone: 302-653-3000 or 800-441-8440 • Fax: 302-653-2065  
 www.eaglegrp.com • www.eaglegrpnews.com • www.eaglehmc.com

Printed in U.S.A.  
 ©2022 by Eagle Group  
 Rev.12/22

Spec sheets available for viewing, printing or downloading from our online literature library at our websites

Although every attempt has been made to ensure the accuracy of the information provided, we cannot be held responsible for typographical or printing errors. Information and specifications are subject to change without notice. Please confirm at time of order.