



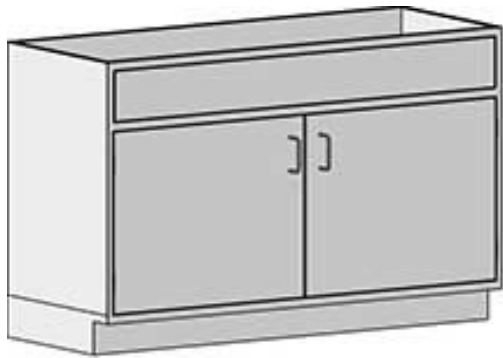
Profit from the Eagle Advantage®

Specification Sheet

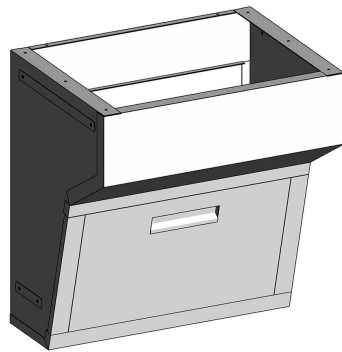
Short Form Specifications

Standing Height Sink Base Cabinets: All stainless steel type 304 enclosed cabinet. 22" deep. 35" height. Cabinet widths range from 18" to 58". Inset construction with double-panel doors and mounted with five-knuckle hinges and roller catch, 4" wire pulls, leveling feet, 4" toe kick. Designed and tested to the SEFA 8 Metal Casework recommended practices.

Angled Sink Bases: Designed for ADA compliance, all stainless steel type 304 construction, sink bases adjoin to other freestanding cabinetry. Widths range from 24" to 48". Removable panel with recessed handle.



#SSC-HSB-56
freestanding sink base



#SSC-HSBA-36
angled sink base

EAGLE GROUP

100 Industrial Boulevard
Clayton, DE 19938-8903 USA

Phone: 302-653-3000 • 800-441-8440

Fax: 302-653-2065

www.eaglegrp.com • www.eaglemhc.com

For custom configuration or fabrication needs, contact our SpecFAB® Division.

Phone: 302-653-3000 • Fax: 302-653-2065 • e-mail: quotes@eaglegrp.com

| | |
|--------------|-------|
| Item No.: | _____ |
| Project No.: | _____ |
| S.I.S. No.: | _____ |

Standing Height Base Cabinets— Freestanding Sink Bases and Angled Sink Bases

MODELS:

- | | |
|--------------------------------------|--------------------------------------|
| <input type="checkbox"/> SSC-HSBL-18 | <input type="checkbox"/> SSC-HSB-56 |
| <input type="checkbox"/> SSC-HSBR-18 | <input type="checkbox"/> SSC-HSB-58 |
| <input type="checkbox"/> SSC-HSBL-24 | <input type="checkbox"/> SSC-HSBA-24 |
| <input type="checkbox"/> SSC-HSBR-24 | <input type="checkbox"/> SSC-HSBA-30 |
| <input type="checkbox"/> SSC-HSB-30 | <input type="checkbox"/> SSC-HSBA-36 |
| <input type="checkbox"/> SSC-HSB-36 | <input type="checkbox"/> SSC-HSBA-48 |
| <input type="checkbox"/> SSC-HSB-48 | |

Freestanding Sink Bases

- Type 304 stainless steel construction.
- All units are 22" (559mm) front-to-back and 35" (889mm) height.
- Open at rear, with partial height back panel, to allow for plumbing access.
- Left or right swing door, or double doors.
- Five-knuckle hinges.
- Doors feature wire pull handles.
- 4" (102mm)-high toe kick.
- Custom sizes available.

Angled Sink Bases

- Type 304 stainless steel construction.
- All units are 22" (559mm) front-to-back.
- These units adjoin side-by-side to other Standing Height Base Cabinets.
- Open at rear, with partial height back panel, to allow for plumbing access.
- Removable front service panel with recessed handle.
- ADA-compliant.

Certifications / Approvals

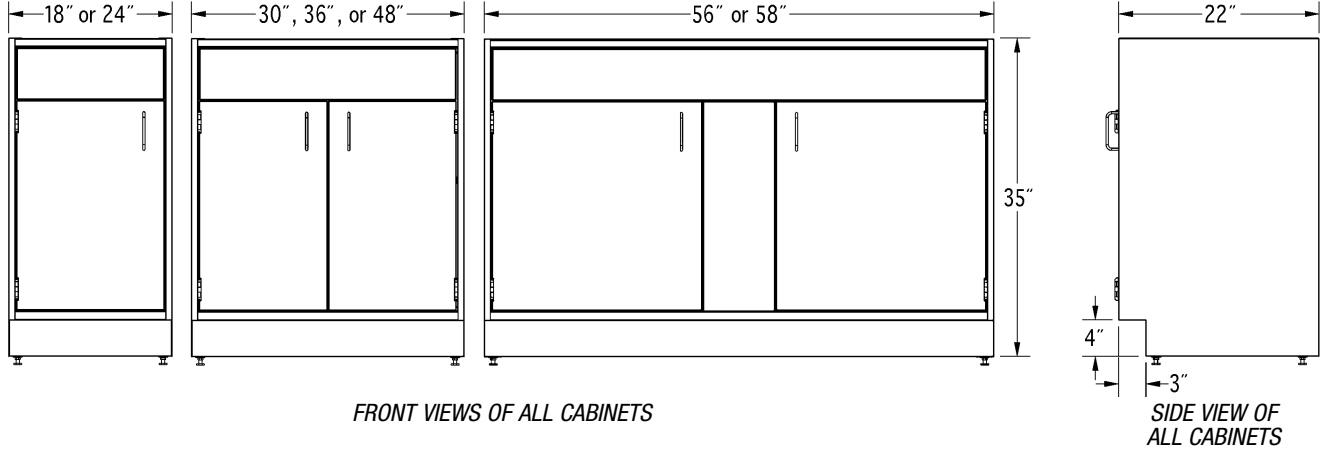


SEFA 8 Metal Casework

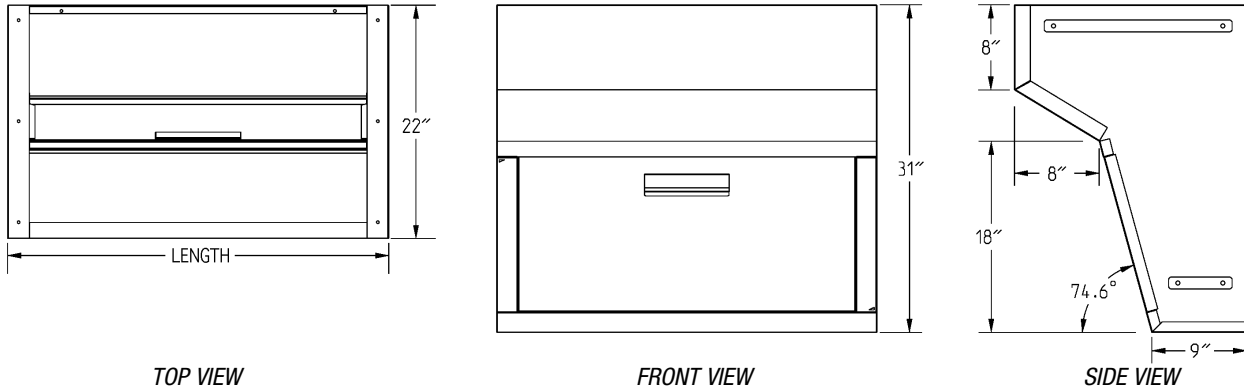
Item No.: _____
Project No.: _____
S.I.S. No.: _____

Standing Height Base Cabinets...

Freestanding Sink Bases



Angled Sink Bases



Freestanding Sink Bases

| depth | | width | | description | weight | | model # |
|-------|-----|-------|------|------------------|--------|-------|--------------------|
| in | mm | in | mm | | lbs. | kg | |
| 22" | 559 | 18" | 457 | left swing door | 99 | 44.9 | SSC-HSBL-18 |
| 22" | 559 | 18" | 457 | right swing door | 99 | 44.9 | SSC-HSBR-18 |
| 22" | 559 | 24" | 610 | left swing door | 124 | 56.2 | SSC-HSBL-24 |
| 22" | 559 | 24" | 610 | right swing door | 124 | 56.2 | SSC-HSBR-24 |
| 22" | 559 | 30" | 762 | double doors | 174 | 78.9 | SSC-HSB-30 |
| 22" | 559 | 36" | 914 | double doors | 183 | 83.0 | SSC-HSB-36 |
| 22" | 559 | 48" | 1219 | double doors | 199 | 90.3 | SSC-HSB-48 |
| 22" | 559 | 56" | 1524 | double doors | 219 | 99.3 | SSC-HSB-56 |
| 22" | 559 | 58" | 1473 | double doors | 222 | 100.7 | SSC-HSB-58 |

Angled Sink Bases

| depth | | width | | weight | | model # |
|-------|-----|-------|------|--------|------|--------------------|
| in | mm | in | mm | lbs. | kg | |
| 22" | 559 | 24" | 610 | 53 | 24.0 | SSC-HSBA-24 |
| 22" | 559 | 30" | 762 | 56 | 25.4 | SSC-HSBA-30 |
| 22" | 559 | 36" | 914 | 62 | 28.2 | SSC-HSBA-36 |
| 22" | 559 | 48" | 1219 | 75 | 34.0 | SSC-HSBA-48 |

EAGLE GROUP

100 Industrial Boulevard, Clayton, DE 19938-8903 USA
Phone: 302-653-3000 or 800-441-8440 • Fax: 302-653-2065
www.eaglegrp.com • www.eaglehmc.com

Printed in U.S.A.
©2021 by Eagle Group
Rev. 11/21

Spec sheets available for viewing, printing or downloading from our online literature library at www.eaglegrp.com

Although every attempt has been made to ensure the accuracy of the information provided, we cannot be held responsible for typographical or printing errors. Information and specifications are subject to change without notice. Please confirm at time of order.