

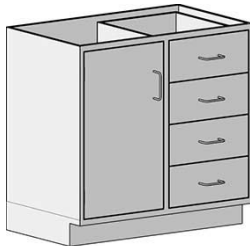


Profit from the Eagle Advantage®

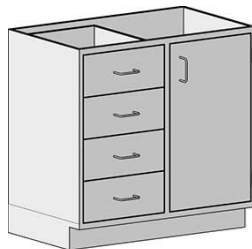
# Specification Sheet

## Short Form Specifications

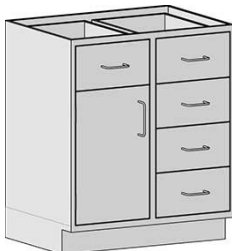
All stainless steel type 304 enclosed cabinet. 22"-deep. 35" height. Cabinet widths range from 30" to 48". Cabinets with four 7"-high drawers feature all drawers on one side and full-height door on the opposite side. Cabinets with five 7"-high drawers feature four of the drawers on one side, and one drawer and partial-height door on the opposite side. Inset construction with double-panel doors and drawer faces, door mounted with five-knuckle hinges and roller catch, drawers provided with full-extension ball bearing drawer slides, 4" wire pull on all doors and drawers, leveling feet, 4" toe kick, and adjustable shelf. Designed and tested to the SEFA 8 Metal Casework recommended practices.



#SSC-HDDL7-36



#SSC-HDDR7-36



#SSC-HDDL7D-30



#SSC-HDDRT7D-30

Item No.:	_____
Project No.:	_____
S.I.S. No.:	_____

## Standing Height Base Cabinets with Door/Drawer Combination— with Four or Five 7" Drawers

### MODELS:

- |                                       |   |
|---------------------------------------|---|
| <input type="checkbox"/> SSC-HDDL7-30 | <input type="checkbox"/> SSC-HDDL7D-30  |
| <input type="checkbox"/> SSC-HDDR7-30 | <input type="checkbox"/> SSC-HDDRT7D-30 |
| <input type="checkbox"/> SSC-HDDL7-36 | <input type="checkbox"/> SSC-HDDL7D-36  |
| <input type="checkbox"/> SSC-HDDR7-36 | <input type="checkbox"/> SSC-HDDRT7D-36 |
| <input type="checkbox"/> SSC-HDDL7-48 | <input type="checkbox"/> SSC-HDDL7D-48  |
| <input type="checkbox"/> SSC-HDDR7-48 | <input type="checkbox"/> SSC-HDDRT7D-48 |

### Design and Construction Features

- Type 304 stainless steel construction.
- All units are 22" (559mm) front-to-back and 35" (889mm) height.
- Units with four drawers feature all the drawers on one side of the cabinet, and left or right swing door on the other side.
- Units with five drawers feature four of the drawers on one side, and one drawer and partial-height left or right swing door on the other side.
- Drawers and doors feature wire pull handles.
- 4" (102mm)-high toe kick.
- Inset construction with double-panel doors and drawer faces.
- Full-extension ball bearing slides.
- Five-knuckle hinges.
- Leveling feet accessible from inside the cabinet.
- Shelves adjustable on 1/2" increments.

### Options / Accessories

- |   |   |
|---|---|
| <input type="checkbox"/> Glass doors        | <input type="checkbox"/> Soft-close drawer slides |
| <input type="checkbox"/> Door locks         | <input type="checkbox"/> Custom drawer/door pulls |
| <input type="checkbox"/> Drawer locks       | <input type="checkbox"/> Custom sizes             |
| <input type="checkbox"/> Additional shelves |   |

### Certifications / Approvals



SEFA 8 Metal Casework

### EAGLE GROUP

100 Industrial Boulevard  
Clayton, DE 19938-8903 USA

Phone: 302-653-3000 • 800-441-8440

Fax: 302-653-2065

www.eaglegrp.com • www.eaglemhc.com

For custom configuration or fabrication needs, contact our SpecFAB® Division.

Phone: 302-653-3000 • Fax: 302-653-2065 • e-mail: quotes@eaglegrp.com

EG03.05 Rev. 11/21

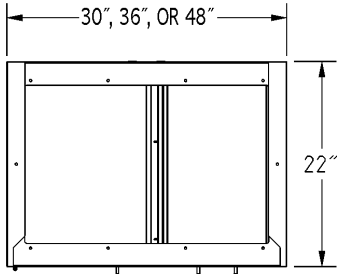
Spec sheets available for viewing, printing or downloading from our online literature library at [www.eaglegrp.com](http://www.eaglegrp.com)

Eagle Foodservice Equipment, Eagle MHC, and SpecFAB® are divisions of Eagle Group. ©2021 by the Eagle Group

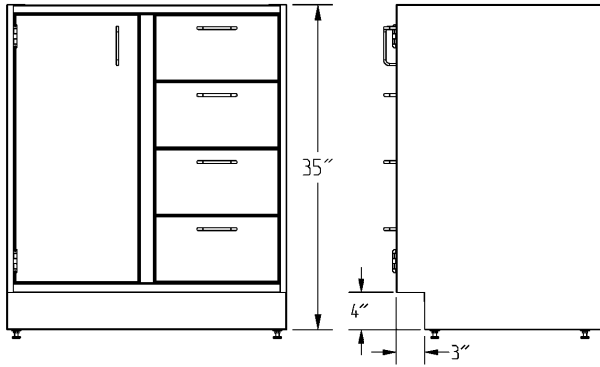
Item No.: \_\_\_\_\_  
Project No.: \_\_\_\_\_  
S.I.S. No.: \_\_\_\_\_

## Standing Height Base Cabinets with Door-Drawer Combination —with Four or Five 7" Drawers

**Units with Four 7" (178mm) Drawers**



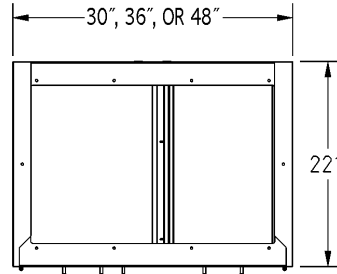
TOP VIEW



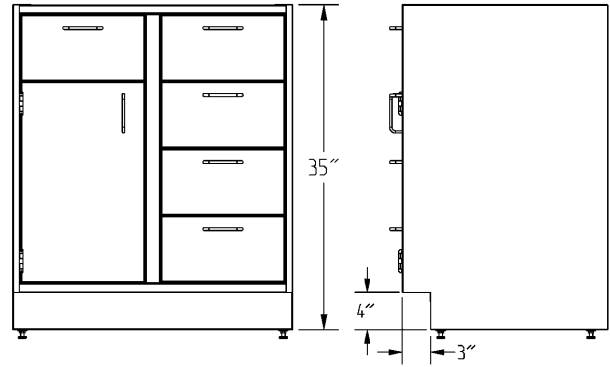
FRONT VIEW

SIDE VIEW

**Units with Five 7" (178mm) Drawers**



TOP VIEW



FRONT VIEW

SIDE VIEW

(Note: Units with left swing door shown)

depth		width		description	weight		model #	weight		model #
in	mm	in	mm		lbs.	kg		lbs.	kg	
22"	559	30"	762	left swing door	202	91.6	<b>SSC-HDDL7-30</b>	244	110.7	<b>SSC-HDDL7D-30</b>
22"	559	30"	762	right swing door	202	91.6	<b>SSC-HDDR7-30</b>	244	110.7	<b>SSC-HDDR7D-30</b>
22"	559	36"	914	left swing door	211	95.7	<b>SSC-HDDL7-36</b>	253	114.8	<b>SSC-HDDL7D-36</b>
22"	559	36"	914	right swing door	211	95.7	<b>SSC-HDDR7-36</b>	253	114.8	<b>SSC-HDDR7D-36</b>
22"	559	48"	1219	left swing door	227	102.9	<b>SSC-HDDL7-48</b>	269	122.0	<b>SSC-HDDL7D-48</b>
22"	559	48"	1219	right swing door	227	102.9	<b>SSC-HDDR7-48</b>	269	122.0	<b>SSC-HDDR7D-48</b>

**EAGLE GROUP**  
100 Industrial Boulevard, Clayton, DE 19938-8903 USA  
Phone: 302-653-3000 or 800-441-8440 • Fax: 302-653-2065  
www.eaglegrp.com • www.eaglehmc.com

Printed in U.S.A.  
©2021 by Eagle Group  
Rev. 11/21

Spec sheets available for viewing, printing or downloading from our online literature library at [www.eaglegrp.com](http://www.eaglegrp.com)

Although every attempt has been made to ensure the accuracy of the information provided, we cannot be held responsible for typographical or printing errors. Information and specifications are subject to change without notice. Please confirm at time of order.