

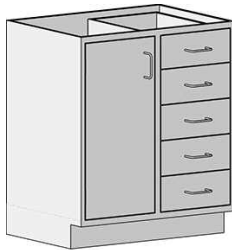


Profit from the Eagle Advantage®

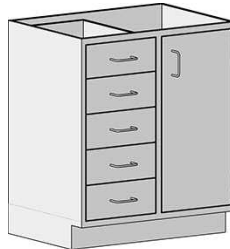
Specification Sheet

Short Form Specifications

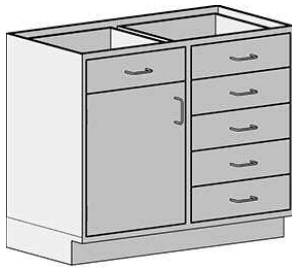
All stainless steel type 304 enclosed cabinet. 22"-deep. 35" height. Cabinet widths range from 30" to 48". Cabinets with five 6"-high drawers feature all drawers on one side and full-height door on the opposite side. Cabinets with six 6"-high drawers feature five of the drawers on one side, and one drawer and partial-height door on the opposite side. Inset construction with double-panel doors and drawer faces, door mounted with five-knuckle hinges and roller catch, drawers provided with full-extension ball bearing drawer slides, 4" wire pull on all doors and drawers, leveling feet, 4" toe kick, and adjustable shelf. Designed and tested to the SEFA 8 Metal Casework recommended practices.



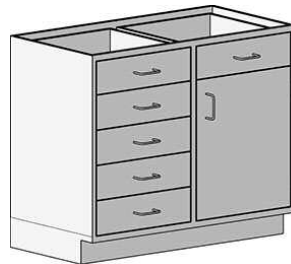
#SSC-HDDL6-30



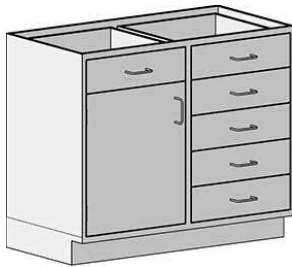
#SSC-HDDR6-30



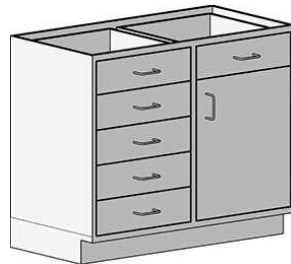
#SSC-HDDL6-36



#SSC-HDDR6-36



#SSC-HDDL6-48



#SSC-HDDR6-48

Item No.:	_____
Project No.:	_____
S.I.S. No.:	_____

Standing Height Base Cabinets with Door/Drawer Combination— with Five or Six 6" Drawers

MODELS:

- | | | |
|---------------------------------------|---------------------------------------|---------------------------------------|
| <input type="checkbox"/> SSC-HDDL6-30 | <input type="checkbox"/> SSC-HDDL6-36 | <input type="checkbox"/> SSC-HDDL6-48 |
| <input type="checkbox"/> SSC-HDDR6-30 | <input type="checkbox"/> SSC-HDDR6-36 | <input type="checkbox"/> SSC-HDDR6-48 |
| <input type="checkbox"/> SSC-HDDL6-30 | <input type="checkbox"/> SSC-HDDL6-36 | <input type="checkbox"/> SSC-HDDL6-48 |
| <input type="checkbox"/> SSC-HDDR6-30 | <input type="checkbox"/> SSC-HDDR6-36 | <input type="checkbox"/> SSC-HDDR6-48 |

Design and Construction Features

- Type 304 stainless steel construction.
- All units are 22" (559mm) front-to-back and 35" (889mm) height.
- Units with five drawers feature all the drawers on one side of the cabinet, and left or right swing door on the other side.
- Units with six drawers feature five of the drawers on one side, and one drawer and partial-height left or right swing door on the other side.
- Drawers and doors feature wire pull handles.
- 4" (102mm)-high toe kick.
- Inset construction with double-panel doors and drawer faces.
- Full-extension ball bearing slides.
- Five-knuckle hinges.
- Leveling feet accessible from inside the cabinet.
- Shelves adjustable on 1/2" increments.

Options / Accessories

- | | |
|---|---|
| <input type="checkbox"/> Glass doors | <input type="checkbox"/> Soft-close drawer slides |
| <input type="checkbox"/> Door locks | <input type="checkbox"/> Custom drawer/door pulls |
| <input type="checkbox"/> Drawer locks | <input type="checkbox"/> Custom sizes |
| <input type="checkbox"/> Additional shelves | |

Certifications / Approvals



SEFA 8 Metal Casework

EAGLE GROUP

100 Industrial Boulevard
Clayton, DE 19938-8903 USA

Phone: 302-653-3000 • 800-441-8440

Fax: 302-653-2065

www.eaglegrp.com • www.eaglemhc.com

For custom configuration or fabrication needs, contact our SpecFAB® Division.

Phone: 302-653-3000 • Fax: 302-653-2065 • e-mail: quotes@eaglegrp.com

EG03.00E Rev. 05/21

Spec sheets available for viewing, printing or downloading from our online literature library at www.eaglegrp.com

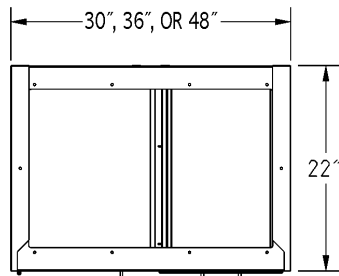
Eagle Foodservice Equipment, Eagle MHC, and SpecFAB® are divisions of Eagle Group. ©2021 by the Eagle Group



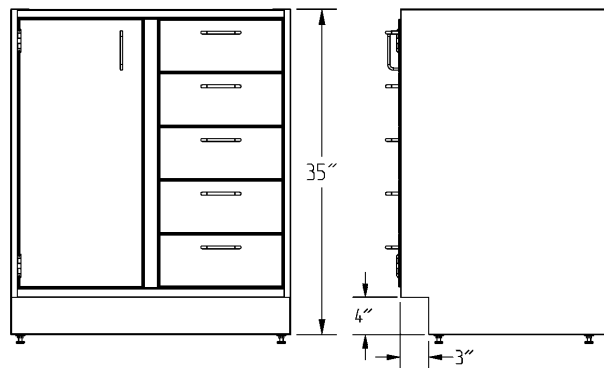
Item No.: _____
 Project No.: _____
 S.I.S. No.: _____

Standing Height Base Cabinets with Door-Drawer Combination —with Five or Six 6" Drawers

Units with Five 6" (152mm) Drawers



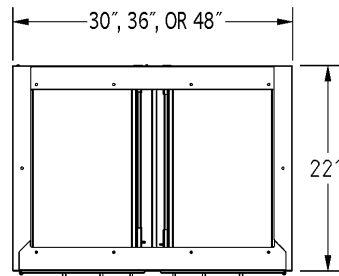
TOP VIEW



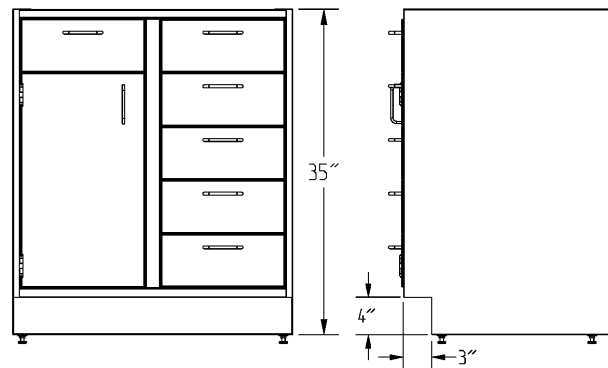
FRONT VIEW

SIDE VIEW

Units with Six 6" (152mm) Drawers



TOP VIEW



FRONT VIEW

SIDE VIEW

(Note: Units with left swing door shown)

depth		width		description	weight		model #	weight		model #
in	mm	in	mm		lbs.	kg		lbs.	kg	
22"	559	30"	762	left swing door	209	94.8	SSC-HDDL6-30	234	106.1	SSC-HDDL6D-30
22"	559	30"	762	right swing door	209	94.8	SSC-HDDR6-30	234	106.1	SSC-HDDR6D-30
22"	559	36"	914	left swing door	218	98.0	SSC-HDDL6-36	243	110.2	SSC-HDDL6D-36
22"	559	36"	914	right swing door	218	98.0	SSC-HDDR6-36	243	110.2	SSC-HDDR6D-36
22"	559	48"	1219	left swing door	234	106.1	SSC-HDDL6-48	259	117.5	SSC-HDDL6D-48
22"	559	48"	1219	right swing door	234	106.1	SSC-HDDR6-48	259	117.5	SSC-HDDR6D-48

EAGLE GROUP
 100 Industrial Boulevard, Clayton, DE 19938-8903 USA
 Phone: 302-653-3000 or 800-441-8440 • Fax: 302-653-2065
 www.eaglegrp.com • www.eaglegrp.com

Printed in U.S.A.
 ©2021 by Eagle Group
 Rev. 05/21

Spec sheets available for viewing, printing or downloading from our online literature library at www.eaglegrp.com

Although every attempt has been made to ensure the accuracy of the information provided, we cannot be held responsible for typographical or printing errors. Information and specifications are subject to change without notice. Please confirm at time of order.