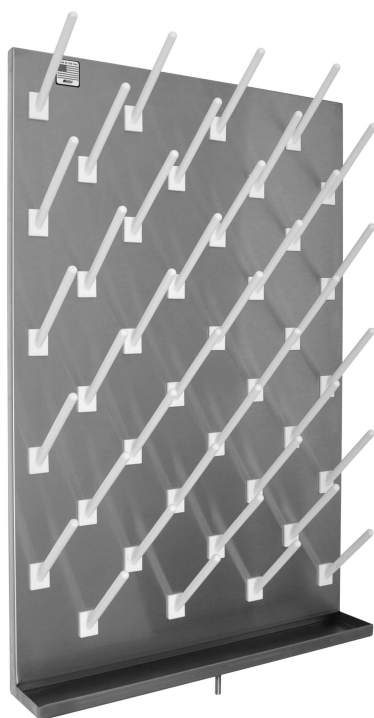


Item No.: _____
 Project No.: _____
 S.I.S. No.: _____

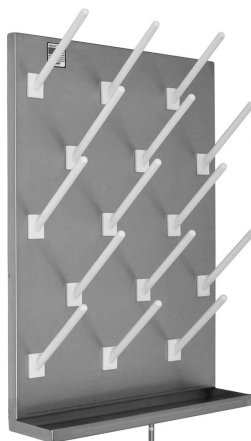
Specification Sheet

Short Form Specifications

Heavy gauge type 304 stainless steel construction. Comes with 15 to 88 pegs, depending on model. Pegs are 6"-long white polymer. 4" integral drip trough, with 36"-long clear flexible drain tube. Wall-mounting bracket included.



#SSC-PB2436-4



#SSC-PB1824-4

Pegboards

MODELS:

- | | |
|---------------------------------------|---------------------------------------|
| <input type="checkbox"/> SSC-PB1824-4 | <input type="checkbox"/> SSC-PB3624-4 |
| <input type="checkbox"/> SSC-PB2418-4 | <input type="checkbox"/> SSC-PB3630-4 |
| <input type="checkbox"/> SSC-PB2424-4 | <input type="checkbox"/> SSC-PB3636-4 |
| <input type="checkbox"/> SSC-PB2430-4 | <input type="checkbox"/> SSC-PB4824-4 |
| <input type="checkbox"/> SSC-PB2436-4 | <input type="checkbox"/> SSC-PB4830-4 |
| <input type="checkbox"/> SSC-PB3024-4 | <input type="checkbox"/> SSC-PB4836-4 |
| <input type="checkbox"/> SSC-PB3030-4 | <input type="checkbox"/> SSC-PB-6PEG |
| <input type="checkbox"/> SSC-PB3036-4 | <input type="checkbox"/> SSC-PB-BLANK |

Design and Construction Features

- Heavy gauge type 304 stainless steel construction
- Comes standard with 6" (152mm) white polymer pegs
- 4" (102mm) integral drip trough
- All drip troughs come with 36" (914mm)-long clear flexible drain tubing
- Wall mounting bracket included

Options / Accessories

- Drain grid
- Additional pegs
- Peg hole covers
- 2" trough
- No trough
- Custom sizes

EAGLE GROUP

100 Industrial Boulevard
 Clayton, DE 19938-8903 USA

Phone: 302-653-3000 • 800-441-8440

Fax: 302-653-2065

Certifications / Approvals



SEFA 8 Metal Casework

For custom configuration or fabrication needs, contact our **SpecFAB® Division**.

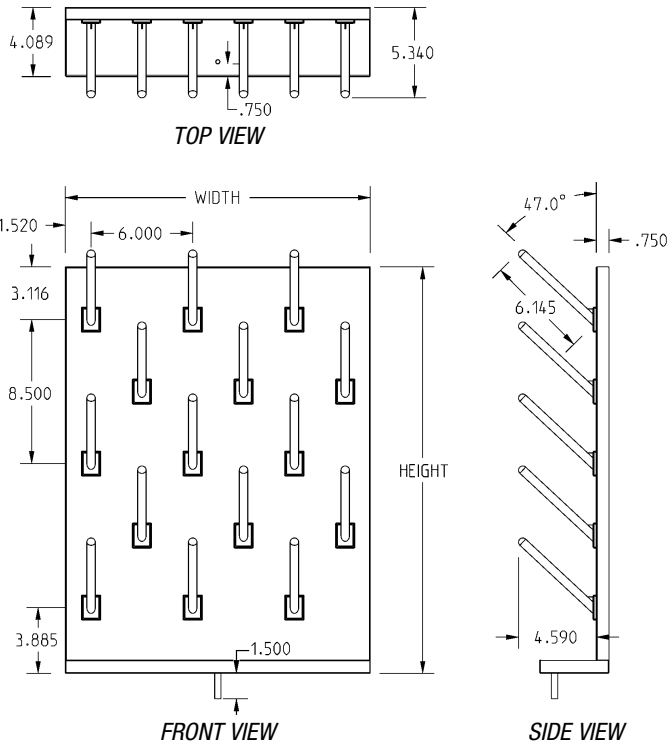
Phone: 302-653-3000 • Fax: 302-653-2065 • e-mail: quotes@eaglegrp.com

EG03.60 Rev. 11/21

Spec sheets available for viewing, printing or downloading from our online literature library at www.eaglegrp.com

Item No.: _____
 Project No.: _____
 S.I.S. No.: _____

Pegboards



width		height		weight		number of pegs	model #
in	mm	in	mm	lbs.	kg		
18"	457	24"	610	13	5.9	15	SSC-PB1824-4
24"	610	18"	457	15	6.8	16	SSC-PB2418-4
24"	610	24"	610	17	7.7	20	SSC-PB2424-4
24"	610	30"	762	23	10.4	32	SSC-PB2430-4
24"	610	36"	914	25	11.3	40	SSC-PB2436-4
30"	762	24"	610	23	10.4	25	SSC-PB3024-4
30"	762	30"	762	25	11.3	50	SSC-PB3030-4
30"	762	36"	914	25	11.3	40	SSC-PB3036-4
36"	914	24"	610	25	11.3	30	SSC-PB3624-4
36"	914	30"	762	26	11.8	60	SSC-PB3630-4
36"	914	36"	914	27	12.2	66	SSC-PB3636-4
48"	1219	24"	610	26	11.8	40	SSC-PB4824-4
48"	1219	30"	762	28	12.7	48	SSC-PB4830-4
48"	1219	36"	914	30	13.6	88	SSC-PB4836-4

Options

description	weight		model #
	lbs.	kg	
10-pack of pegs	4	1.8	SSC-PB-6PEG
10-pack of hole covers	4	1.8	SSC-PB-BLANK

Contact factory for pricing.

EAGLE GROUP

100 Industrial Boulevard, Clayton, DE 19938-8903 USA
 Phone: 302-653-3000 or 800-441-8440 • Fax: 302-653-2065
 www.eaglegrp.com • www.eaglehmc.com

Printed in U.S.A.
 ©2021 by Eagle Group

Rev. 11/21

Spec sheets available for viewing, printing or downloading from our online literature library at www.eaglegrp.com

Although every attempt has been made to ensure the accuracy of the information provided, we cannot be held responsible for typographical or printing errors. Information and specifications are subject to change without notice. Please confirm at time of order.