

Item No.: _____
 Project No.: _____
 S.I.S. No.: _____

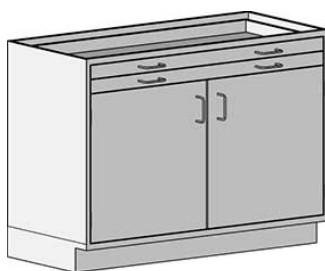
Specification Sheet

Short Form Specifications

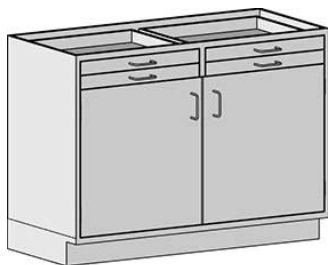
All stainless steel type 304 enclosed cabinet. 22"-deep. 35" height. Cabinet widths range from 18" to 48". Available with two or four 3"-high drawers, or with one or two 6"-high drawers. Inset construction with double-panel doors and drawer faces, door mounted with five-knuckle hinges and roller catch, drawers provided with full-extension ball bearing drawer slides, 4" wire pull on all doors and drawers, leveling feet, 4" toe kick, and adjustable shelf. Designed and tested to the SEFA 8 Metal Casework recommended practices.



#SSC-HDDL3-18



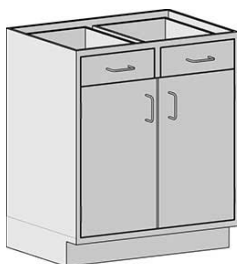
#SSC-HDDT3-48



#SSC-HDDT3D-48



#SSC-HDDR6-18



#SSC-HDDT6D-30

Standing Height Base Cabinets with Door/Drawer Combination— with 3" or 6" Drawers

MODELS:

- | | |
|--|--|
| <input type="checkbox"/> SSC-HDDL3-18 | <input type="checkbox"/> SSC-HDDL6-18 |
| <input type="checkbox"/> SSC-HDDL3-24 | <input type="checkbox"/> SSC-HDDL6-24 |
| <input type="checkbox"/> SSC-HDDR3-18 | <input type="checkbox"/> SSC-HDDR6-18 |
| <input type="checkbox"/> SSC-HDDR3-24 | <input type="checkbox"/> SSC-HDDR6-24 |
| <input type="checkbox"/> SSC-HDDT3-30 | <input type="checkbox"/> SSC-HDDT6-30 |
| <input type="checkbox"/> SSC-HDDT3-36 | <input type="checkbox"/> SSC-HDDT6-36 |
| <input type="checkbox"/> SSC-HDDT3-48 | <input type="checkbox"/> SSC-HDDT6-48 |
| <input type="checkbox"/> SSC-HDDT3D-30 | <input type="checkbox"/> SSC-HDDT6D-30 |
| <input type="checkbox"/> SSC-HDDT3D-36 | <input type="checkbox"/> SSC-HDDT6D-36 |
| <input type="checkbox"/> SSC-HDDT3D-48 | <input type="checkbox"/> SSC-HDDT6D-48 |

Design and Construction Features

- Type 304 stainless steel construction.
- All units are 22" (559mm) front-to-back and 35" (889mm) height.
- Units with 3" (76mm)-high drawers offered with two or four drawers, left or right swing door, or double doors.
- Units with 6" (152mm)-high drawers offered with one or two drawers, left or right swing door, or double doors.
- Drawers feature wire pull handles.
- 4" (102mm)-high toe kick.
- Inset construction with double-panel doors and drawer faces.
- Full-extension ball bearing slides.
- Five-knuckle hinges.
- Leveling feet accessible from inside the cabinet.
- Shelves adjustable on 1/2" increments.

Options / Accessories

- | | |
|---|---|
| <input type="checkbox"/> Glass doors | <input type="checkbox"/> Soft-close drawer slides |
| <input type="checkbox"/> Door locks | <input type="checkbox"/> Custom drawer/door pulls |
| <input type="checkbox"/> Drawer locks | <input type="checkbox"/> Custom sizes |
| <input type="checkbox"/> Additional shelves | |

EAGLE GROUP

100 Industrial Boulevard
 Clayton, DE 19938-8903 USA

Phone: 302-653-3000 • 800-441-8440

Fax: 302-653-2065

www.eaglegrp.com • www.eaglehmc.com

For custom configuration or fabrication needs, contact our SpecFAB® Division.

Phone: 302-653-3000 • Fax: 302-653-2065 • e-mail: quotes@eaglegrp.com

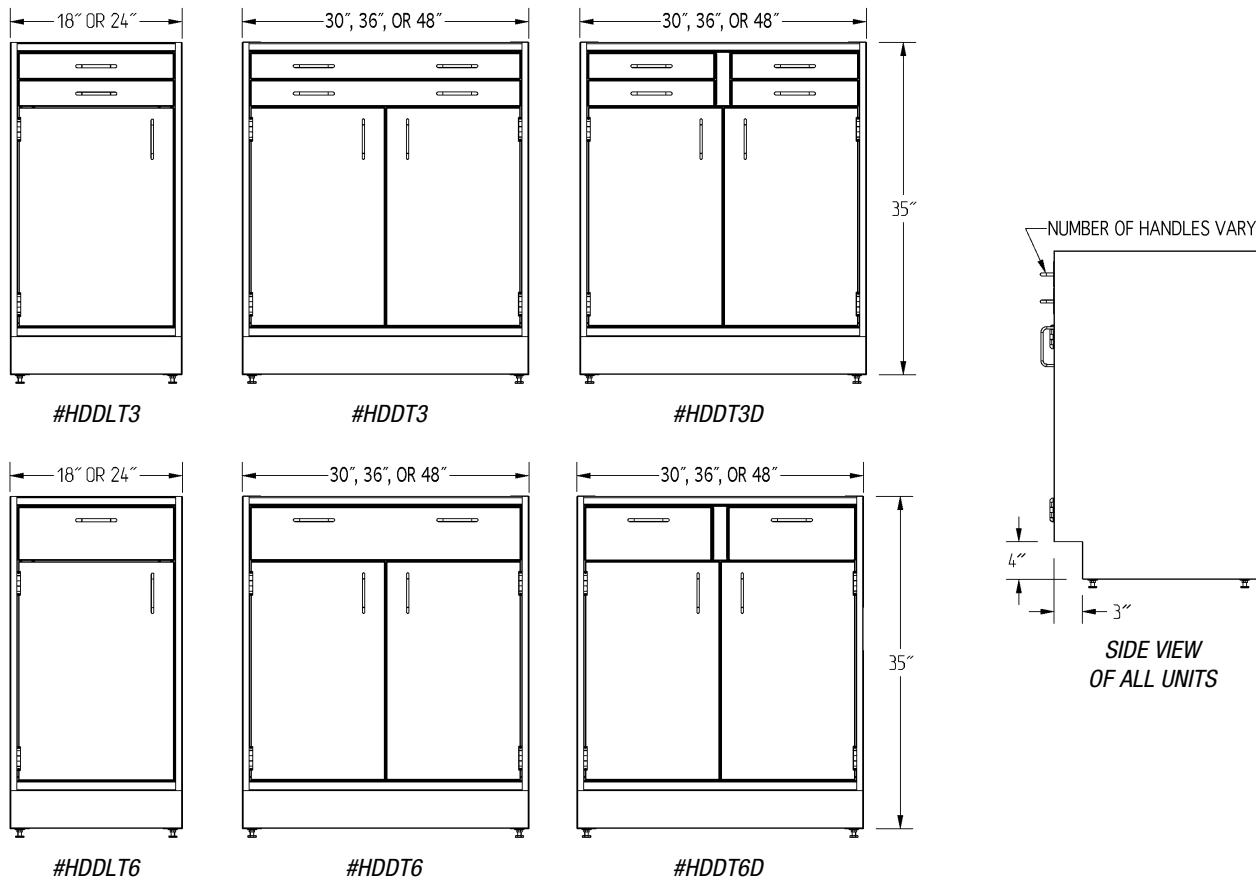
Certifications / Approvals



SEFA 8 Metal Casework

Item No.: _____
 Project No.: _____
 S.I.S. No.: _____

Standing Height Base Cabinets with Door-Drawer Combination



				with Two or Four 3" (76mm) Drawers				with One or Two 6" (152mm) Drawers				
depth		width		weight		no. of drawers	model #	weight		no. of drawers	model #	
in	mm	in	mm	lbs.	kg			lbs.	kg			
22"	559	18"	457	left swing door	94	42.6	2	SSC-HDDL3-18	114	51.7	1	SSC-HDDL6-18
22"	559	18"	457	right swing door	94	42.6	2	SSC-HDRT3-18	114	51.7	1	SSC-HDRT6-18
22"	559	24"	610	left swing door	119	53.9	2	SSC-HDDL3-24	139	63.0	1	SSC-HDDL6-24
22"	559	24"	610	right swing door	119	53.9	2	SSC-HDRT3-24	139	63.0	1	SSC-HDRT6-24
22"	559	30"	762	double doors	214	97.1	2	SSC-HDDT3-30	204	92.5	1	SSC-HDDT6-30
22"	559	36"	914	double doors	223	101.1	2	SSC-HDDT3-36	213	96.6	1	SSC-HDDT6-36
22"	559	48"	1219	double doors	239	108.4	2	SSC-HDDT3-48	229	103.9	1	SSC-HDDT6-48
22"	559	30"	762	double doors	224	101.6	4	SSC-HDDT3D-30	214	97.1	2	SSC-HDDT6D-30
22"	559	36"	914	double doors	233	105.3	4	SSC-HDDT3D-36	223	101.2	2	SSC-HDDT6D-36
22"	559	48"	1219	double doors	249	112.9	4	SSC-HDDT3D-48	239	108.4	2	SSC-HDDT6D-48

EAGLE GROUP
 100 Industrial Boulevard, Clayton, DE 19938-8903 USA
 Phone: 302-653-3000 or 800-441-8440 • Fax: 302-653-2065
 www.eaglegrp.com • www.eaglemhc.com

Printed in U.S.A.
 ©2021 by Eagle Group
 Rev. 11/21

Spec sheets available for viewing, printing or downloading from our online literature library at www.eaglegrp.com

Although every attempt has been made to ensure the accuracy of the information provided, we cannot be held responsible for typographical or printing errors. Information and specifications are subject to change without notice. Please confirm at time of order.