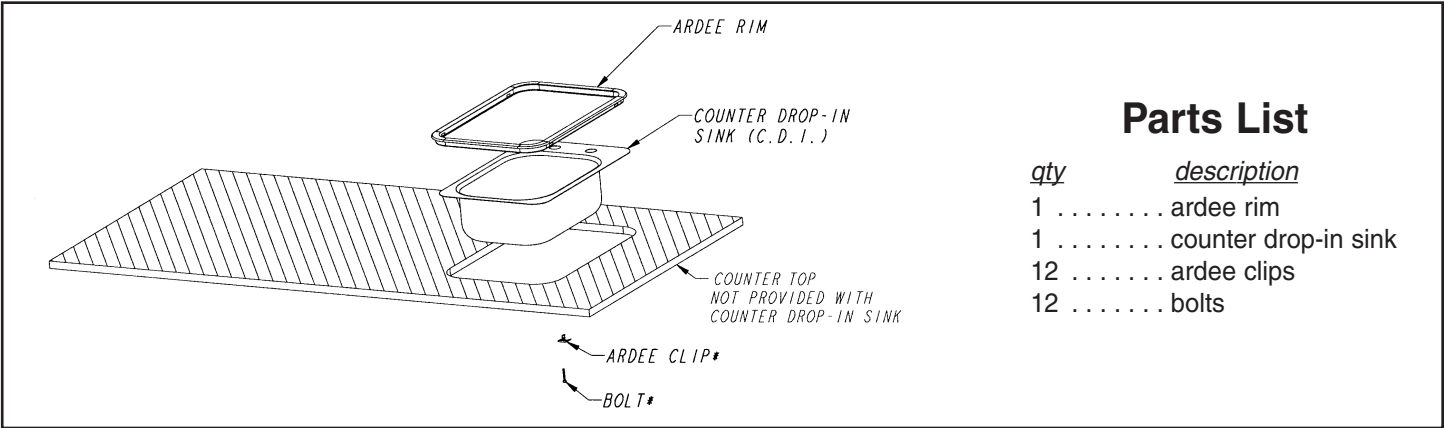


Counter Drop-In Sink INSTALLATION INSTRUCTIONS

CAUTION

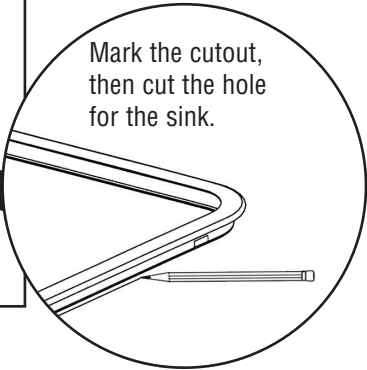
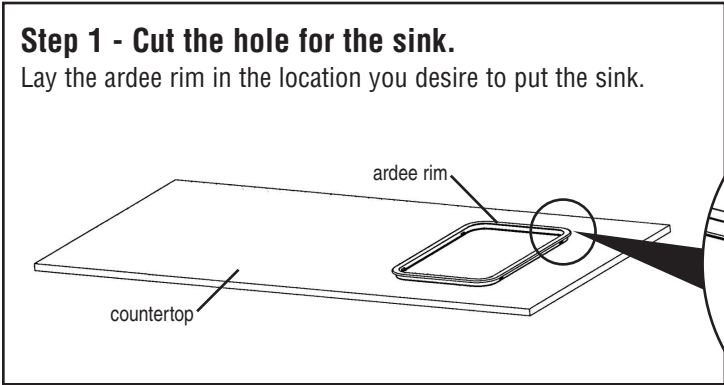
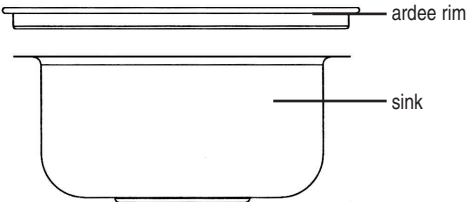
INSPECT CONTENTS IMMEDIATELY AND FILE CLAIM WITH DELIVERING CARRIER FOR ANY DAMAGE.
SAVE YOUR BOX AND ALL PACKING MATERIALS.
 YOU ARE RESPONSIBLE FOR DAMAGE TO YOUR UNIT IF RETURNED IMPROPERLY PACKED.



Parts List

<i>qty</i>	<i>description</i>
1	ardee rim
1	counter drop-in sink
12	ardee clips
12	bolts

Before you begin:
 Lay the ardee rim on top of the sink to ensure a proper fit.



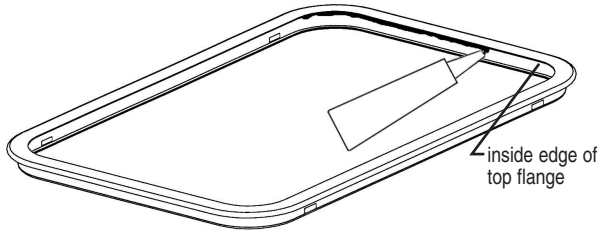
(continued on back page)

Counter Drop-In Sink

INSTALLATION INSTRUCTIONS

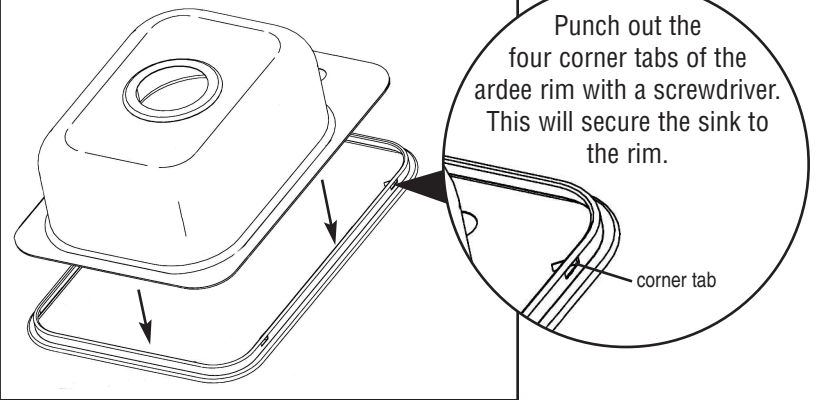
Step 2 - Caulk ardee rim.

Apply caulking to the inside surface of the top flange of the ardee rim.

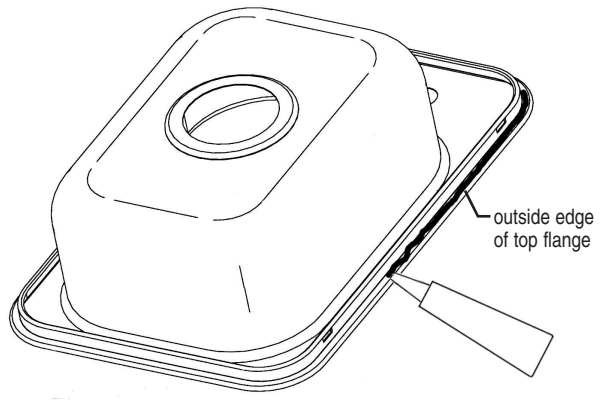


Step 3 - Join sink to ardee rim.

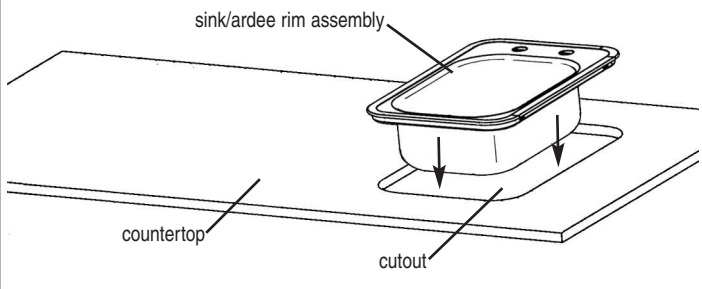
Lay the ardee rim and the sink upside down.



Step 4 - Caulk under the outside edge of the top flange.

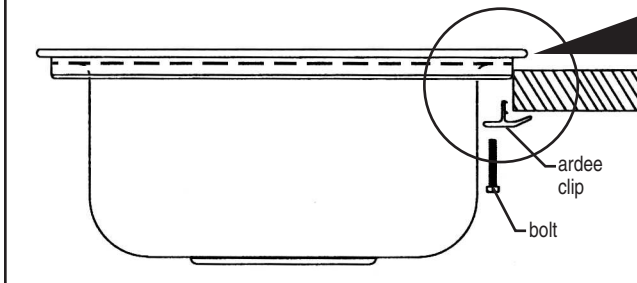


Step 5 - Carefully place the sink and the rim inside the cutout.

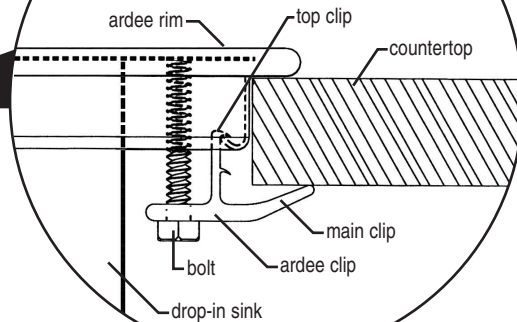


Step 6 - Secure sink/ardee rim assembly to the countertop.

Attach the supplied ardee rim clips and bolts where the corner tabs were punched out.



Note:
Avoid overtightening the ardee clips! This could cause damage.



(End)